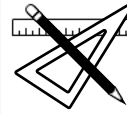
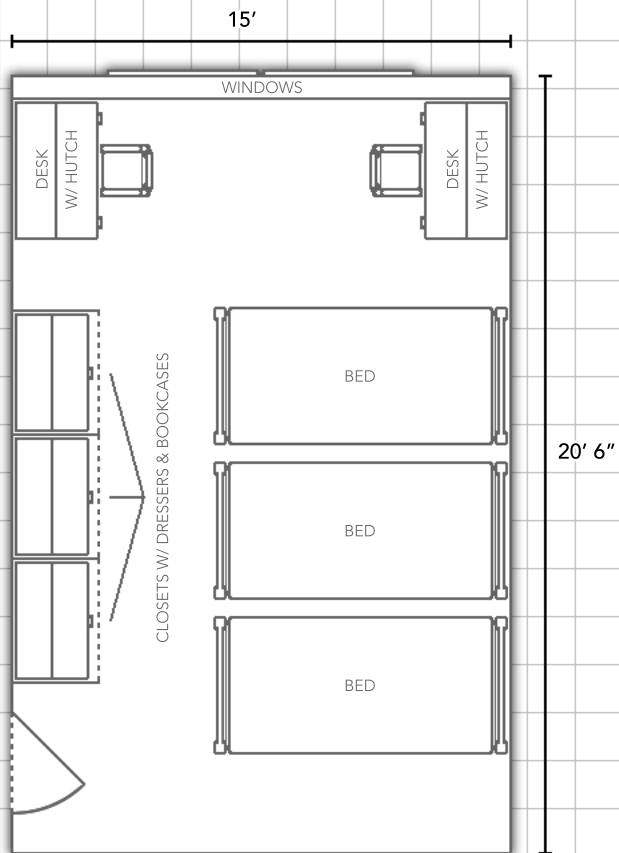


# FORD AND MCKINNEY HALL

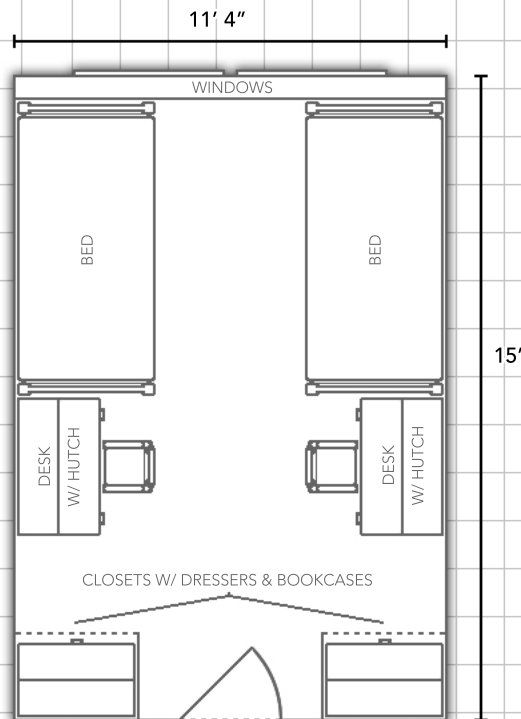
Information available at [WWW.EIU.EDU/HOUSING](http://WWW.EIU.EDU/HOUSING)



## Deluxe Double Room:



## Double Room:



Department:

**Housing and  
Dining Services**



EASTERN ILLINOIS UNIVERSITY™

Bedding:

Bedding in all rooms measure  
80" X 39" (x-long twin)

Furnishings:

Rooms are tiled and feature  
stackable,loftable and bunkable  
furniture

Miscellaneous:

*Layouts are not to scale*