

Member

n/a m/r

NATIONAL ALLIANCE
for MUSICAL THEATRE

Member

 ON THE SQUARE
 Sullivan, Illinois

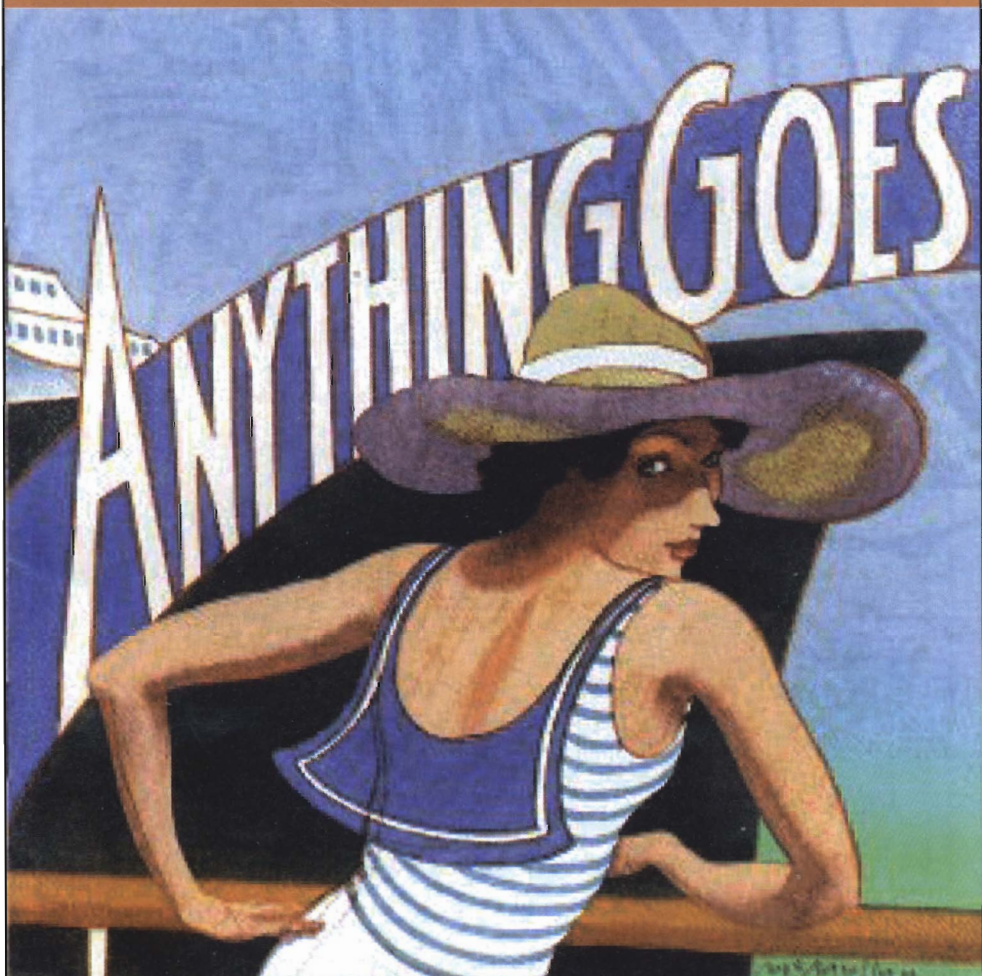
Member

ITA
 Illinois Theatre Association

Leonard A. Anderson
Executive Director

M. Seth Reines
Artistic Director

PRESENTS



JULY 19-30, 2006



This program is partially supported by a grant from the Illinois Arts Council.

Named a Partner In Excellence by the Illinois Arts Council.



PARTNERS IN SULLIVAN

Kari Cataldo, M.D.

(right)

*Board Certified – American
Board of Family Practice*

Shirley Dallmier, PA-C

(left)

*Certified – National
Commission on
Certification of
Physician Assistants*



SBL Sullivan Clinic
7 Hawthorne Lane
Sullivan, IL 61951
www.sarahbush.org

(217) 728-8441



**SARAH BUSH
LINCOLN**
HEALTH SYSTEM

We Believe...
in your good health.



TATE RYAN

www.sarahbush.org

www.sarahbush.org



**SARAH BUSH
LINCOLN**
HEALTH SYSTEM

www.sarahbush.org



Encore!

Tate & Lyle
is proud to
play a part in
supporting
**The Little
Theatre On
The Square.**

TATE & LYLE

CONSISTENTLY FIRST IN RENEWABLE INGREDIENTS

www.tateandlyle.com

www.agri-fab.com

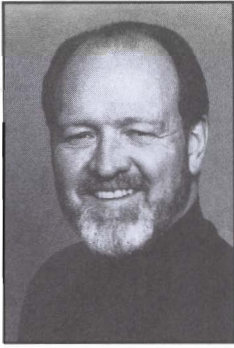
Agri+FabTM
Expect Respect, Integrity & Growth



Supporting the Arts &

Our Community

Sullivan, Illinois



Greetings From The Executive Director

Dear Patrons:

My how time flies...and I'm still having fun!!

This is the 19th summer season that Seth Reines and I have been associated with The Little Theatre On The Square. A lot has transpired during that time. The total number of season subscribers has doubled. More programming - annual Christmas show, fall and spring productions - has been added. Our Education Outreach program with in-house dance and drama classes and touring productions going out to area schools has been quite successful. We have acquired additional buildings for rehearsal space, company housing and technical production shops. And renovation of the theatre and construction of the new office building was completed in 2004.

Next year will mark the 50th summer season in the history of The Little Theatre On The Square. We are planning a great celebration and will keep you posted as events are developed.

We still have plenty of seats that can be "adopted" to help pay for capital improvements. If you have not adopted a seat, please see page 7 of this booklet for more information.

We hope you enjoy the production you are about to see!

Sincerely,

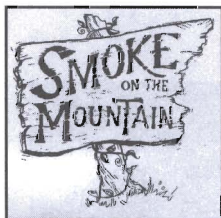
Leonard A. Anderson
Executive Director

Leonard became Executive Director of The Little Theatre On The Square on January 1, 1988 after having served as Managing Director of The Black Hills Playhouse in Custer State Park, South Dakota from January 1976 through May of 1987. Prior to that, he was the Business Manager of Theatre Tulsa in Tulsa, Oklahoma. Leonard earned his Bachelor of Fine Arts and Master of Arts degrees in theatre from the University of South Dakota and a Master of Fine Arts degree in Arts Administration from Southern Methodist University in Dallas, Texas. He is originally from St. Joseph, Missouri and served as a combat infantry platoon leader in Vietnam in 1967. Mr. Anderson currently serves on the Board of Directors for the National Alliance for Musical Theatre.

The Little Theatre On The Square 2006-2007 Mainstage Winter Series

SEE THE FUTURE STARS OF BROADWAY TODAY!

PICK 5 SHOWS FOR \$105 OR NEW PICK 3 SHOWS FOR \$66



Smoke On The Mountain
October 13-15 & 20-22

Yeah, Yeah, Yeah! A Beatles Review
November 10-12 & 17-19



Plaid Tidings
December 13-17 & 19-23

A Dash of Rosemary
February 9-11 & 14-18

A DASH OF
ROSEMARY

*Some
Enchanted
Evening*

Some Enchanted Evening
March 16-18 & 23-25

On Sale To Current Season Subscribers July 19

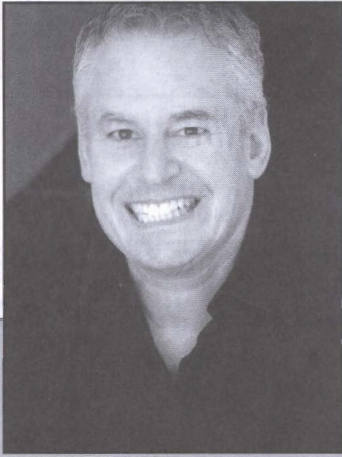
On Sale To The General Public August 1

All Shows Are Subject To Change

This program is partially supported by a grant from the Illinois Arts Council, a state agency.

Box Office — 217.728.7375 or toll free 888.261.9675

www.thelittletheatre.org



M. Seth Reines

Artistic Director

M. Seth Reines, Artistic Producer of Broadway Palm Arizona, is delighted to return to Little Theatre for his 19th season as Artistic Director. He has directed over 400 productions for stage and public television, including national tours of *Sunday in the Park with George* and *South Pacific*, working with such stars as Emily Loesser, Angela Lansbury, Chita Rivera, Oprah, Leslie Uggams, Jerry Herman, Tom Wopat and Peter Allen.

Seth staged the world premieres of *Monky Business*, *Magic Place* and *Body Parts*; the American revivals of *The Red Mill* and *Knickerbocker Holiday*; the American premiere of *Anne of Green Gables*; the Midwestern premiere of *Closer Than Ever* and the West Coast premieres of *Victor/Victoria* and *Ragtime*. This fall Seth will direct national tours of *The Full Monty* and *My Fair Lady*.

Winner of Cleveland Drama Critics and San Francisco Drama Logue awards, Seth is one of the creators of the musical comedy *Monky Business*, which opened at Galveston's Grand Opera House in 1995 and has now played in over 300 cities around the world.

Seth is excited to be a part of Little Theatre's 49th season, working with this enormously talented company of old and new friends. He wishes to dedicate his work to the memory of Dr. Mervin Reines, his father and inspiration.

APPLAUDING
THE PAST.
DIRECTING
THE FUTURE.



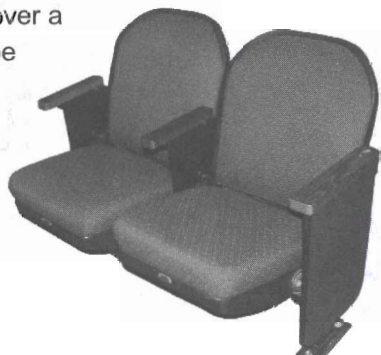
We have a SEAT for you!

We are proud of the quality of our productions and we hope you are too. And, we are proud of the renovation of the theatre that was completed in 2004.

Over 100 patrons have stepped forward to *Adopt-A-Seat* to help us with the cost of capital improvements so that we can continue to showcase our productions in a pleasant, comfortable environment.

Please consider joining this group and *Adopt-A-Seat* in your name or the name of someone you wish to honor. If you commit to donating \$1,000 to our *Adopt-A-Seat* campaign, we will place your name on a seat on the seating chart plaque in the theatre lobby. If you wish, your donation may be paid over a three year period, but your name will be forever inscribed on the plaque.

Most importantly, we hope you will continue to attend our productions and tell your friends about The Little Theatre On The Square!



Performance Company Profiles



Nathan Albert

Nathan Albert, originally from Chicago, is thrilled to make his debut at The Little Theatre On The Square after spending eight months performing in numerous shows at the Broadway Palm West Dinner Theatre in Arizona. There, he was seen as Mordred in *Camelot*, Harry the Horse in *Guys and Dolls*, and as Nick Arnstein in *Funny Girl*, among others. Additional favorite roles include Gaston in *Beauty and the Beast*, Joe/Josephine in *Sugar*, Feste in *Twelfth Night* and performing *The Compleat Works of William Shakespeare (Abridged)*. He holds a B.F.A. in Musical Theatre Performance from Rockford College. Nathan would like to thank his family for their support and love, Seth, JR, and Beth for such opportunities, and God. Let it go!



Melody A. Betts

Melody A. Betts gratefully debuts at The Little Theatre On The Square after her first year as a graduate (actor) student at Western Illinois University. This past year she has been cast as Ama in *Mud, River, Stone*, Mejra in *The Monument* and Madame Arcati in Noel Coward's *Blithe Spirit*. She was nominated to compete for the Irene Ryan Scholarship at the American Collegiate Theater Festival for the latter role. Some of Ms. Betts' favorite roles played include Margaret Alexander in *Amen Corner*, Acid Queen in *TOMMY the musical* and Clytemnestra in *Agamemnon*. She not only pursues acting as a career but singing and writing as well. Melody's first writing venture, *Sand In Your Crack*, was performed this past April at WIU's B.Y.O.P. production. Melody credits God for any success that may happen to come her way and expresses her everlasting gratitude to her patient and wonderful family for their love and support.



Matthew Chmiel

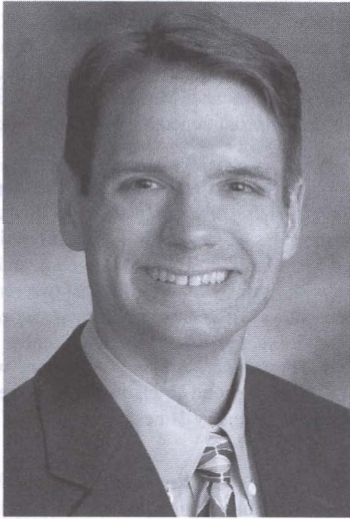
Matt is a senior at Arthur High School where he is a member of the National Honor Society and is involved in both music and drama. He has studied dance and drama with The Little Theatre's S.T.A.R. "Students' Theatre Arts Reach" program since his 7th grade year. As a student Matt has appeared in *Schoolhouse Rock Live Jr.*, *Once On This Island Jr.* and most recently as Jafar in Disney's *Aladdin Jr.* His last performance in summer theatre was in *Oliver* and he is very excited about returning to LTOTS this summer as the purser in *Anything Goes*. He would like to thank the staff at Arthur High School for their support in allowing him time off to do what he loves best, his family for always being there for him and a special thanks to Ms. Marie and all of his instructors, without them he wouldn't be here.



Ghuon "Max" Chung

Ghuon "Max" Chung excitedly makes his Little Theatre On The Square debut in *Thoroughly Modern Millie*. He played Judas in *Godspell* (Phoenix Ascending Theatre), Constantine in *A Day In Hollywood/A Night In the Ukraine* (Illinois Theatre Center), Ito in *Mame* (Marriott-Lincolnshire Theatre and Beef & Boards Dinner Theatre), Louis and Dennis in *Sunday in the Park With George* (Pegasus Players), Uncle Pleasant in *Orpheus Descending* (The Artistic Home), Samuel in *The Pirates of Penzance* (Light Opera Works) and lastly in the ensemble of Ravinia Festival's *Anyone Can Whistle*. He is the voice of Chang Wong in the audio books of the *Left Behind* series and is a member of Actors' Equity. Love and thanks go out to his family and friends.

Welcoming New PATIENTS



**Volney L.
Willett III, M.D.**
Family Practitioner

•
Treating—

Babies

Children

Teens

Adults

Seniors

•
Call 728-2042

for an
appointment.

Sullivan Medical Center
1220 West Jackson
Sullivan, Illinois

dmh Decatur
Memorial
Hospital

Performance Company Profiles



Barbie Diewald

Barbie Diewald is delighted to be making her Little Theatre debut this season. Originally from Bolingbrook, IL, she is pursuing her BFA in Musical Theatre and dance minor from Millikin University. Recently, she has appeared in productions of *Eleemosynary*, *Medea*, *Damn Yankees* and *Trouble in Tahiti*, as well as performing with the Millikin Dance Ensemble and participating in a Cabaret performance in the Dominican Republic. She teaches ballet through the Millikin Preparatory Department and has danced with the Chicago Festival Ballet and Midwest Ballet Theatre. Special thanks to her parents for their constant encouragement and support.



C.K. Edwards

C.K. Edwards feels blessed to make his first appearance on the stage of The Little Theatre On The Square. He's truly pumped about this entire summer's season. Back in December he graduated from the University of Oklahoma, where he has played Mr. Magix in *My One and Only* and The Proprietor in *Assassins*. Working with Lyric Theatre for the last two seasons he has played bit roles in such shows as *Aida*, *Jesus Christ Superstar*, *Chess* and *The Best Little Whorehouse in Texas*. He has recently done *Smokey Joe's Cafe* with Sooner Theatre of Norman, Oklahoma, where he played the role of Victor. C.K. is also proud to claim that he owes his initiation into the tap world to the late Gregory Hines, his childhood idol.



Ann Ehnes

Ann Ehnes is thrilled to be returning for another summer at The Little Theatre. Originally from Brandon, Manitoba, Ann holds a BFA in musical theatre and a minor in dance from Millikin University where she graduated with honors in 2004. Since then she has worked professionally across the midwest, as well as in New York and, most recently, in productions of *Oklahoma!* and *Funny Girl* in Arizona. In addition to performing, Ann enjoys teaching, choreographing, as well as playing piano and French horn. She is also an avid Red Sox fan. Thank you to Seth and my family!



Klinton Gibbons

Klinton Gibbons is happy to return to the stage of The Little Theatre On The Square this summer in *The Full Monty*. You might have seen Klint on stage last summer in *Joseph...Dreamcoat*, *Once On This Island Jr.* or in Disney's *Aladdin Jr.* Klinton attends Jr. High school in Lovington, IL and has a dream to be a performer on Broadway.



Glory Kissel

Mrs. Kissel (Mrs. Harcourt, Jeanette Bermeister) is thrilled to be making her first appearance at The Little Theatre On The Square. She has recently appeared as Cerimon in Mary Zimmerman's production of *Pericles* at The Goodman. Previously she resided in Nashville. Nashville credits include *Romeo and Juliet*, the world premiere of *Francis of Guernica*, *The Widow's Best Friend* and *Annie*. Chicago credits include *Over The River And Through The Woods* at Theatre at the Center, as well as 303 performances at the Mercury Theatre. Other Chicago credits include the 2004 Chicago Humanities Festival, *Musical Comedy Murders of 1940* at Drury Lane Oakbrook and *Anyone Can Whistle* at Ravinia in 2005. Film credits include *Existo* and *Darwin's Dream*. Television credits include the pilot *Carter Raye*.



WILL
SUPPORTS
GREAT
PERFORMANCES
BY
THE LITTLE
THEATRE ON
THE SQUARE



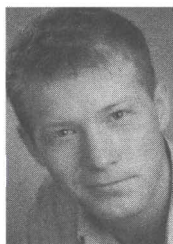
www.will.uiuc.edu

Performance Company Profiles



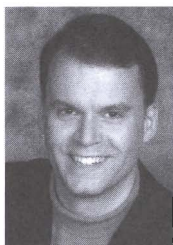
Rebecca Kloha

Becca is honored to be returning to LTOTS for her second season. Last summer she was seen in the theatre's five Mainstage productions, as well as the children's shows. Becca will be a senior at Webster University where she is majoring in Musical Theatre. Recent credits include *Bye Bye Birdie* (Deborah Sue) and *The Man Who Came to Dinner* (June Stanley). Other credits include *The Wizard of Oz* (Dorothy), *The Sound of Music* (Maria), and *Nunsense* (Sister Mary Leo). Becca would like to thank her parents, sisters, and new brother-in-law for their unending love and support; and her Lord and Savior for giving her the ability to share her gifts with you – Enjoy the show!



Jeff Kready

Jeff is thrilled to be back for a second season at LTOTS! Favorite roles include Rum Tum Tugger (*CATS*), Billy Lawlor (*42nd Street*), Bobby Child (*Crazy for You*), and Billy Crocker (*Anything Goes*). Since last summer he has quit his teaching job, got married to the lovely Courtney Self (also on stage), and performed in FL and PA. Thanks to his supportive family for helping him through all the recent changes in his life. Jeff will make his Broadway debut this fall in the revival of *Les Miserables*. 1JOHN 3:23



Richard Marlatt

Richard Marlatt was last here in 2001, appearing that summer as Alan Swann in *My Favorite Year*. His other credits across the country include: Henry Ribolow in *Syncopation* (Meadow Brook Theatre), Jules in *Sunday in the Park With George* (opposite Patti LuPone and Audra McDonald at Ravinia), Torvald in *A Doll's House* (Madison Repertory), Versati in *The Underpants* (Human Race Theatre), Melvin P. Thorpe in *The Best Little Whorehouse* (Peninsula Players), Petruchio in *The Taming of the Shrew* (Nebraska Shakespeare Festival), Tateh in *Ragtime*, Harold Hill in *The Music Man*, Falstaff in *Merry Wives of Windsor*, and Don Quixote in *Man of La Mancha*. He's also played Hamlet, Scrooge and Dracula, has toured coast-to-coast, and has worked with The Goodman, Actors Theatre of Louisville, First Folio Shakespeare Festival, Marriott Theatre, Boarshead Theatre, Michigan Opera Theatre and Drury Lane. Richard is a Company Member with Shaw Chicago, an Associate Artist at Chicago Dramatists, and has a Fine Arts Degree as an Actor and Director. He's trained in London at The Royal National Theatre and in New York at The National Shakespeare Conservatory, and is a proud member of Actors' Equity.

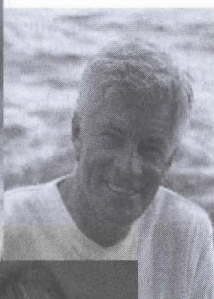


Patrick McCarthy

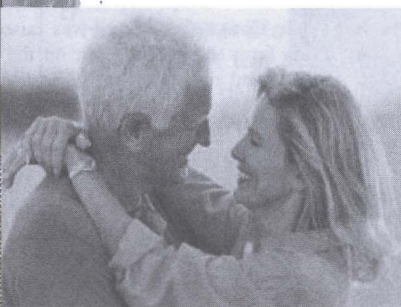
Patrick McCarthy has been part of the LTOTS family since 1988, and has appeared onstage here 20 times over 10 seasons and directed 16 shows. His favorite roles at LTOTS include Scrooge in *Christmas Carol*, Bernie Buxbaum/Mrs. Eggleston in *Little Me*, Crisparkle in *Drood*, Dr. Colonel in *Grand Hotel*, and Spettigue in *Where's Charley*. Other regional appearances include Friar Lawrence in *Romeo & Juliet*, Parolles in *All's Well That Ends Well*, Antonio in *Much Ado About Nothing*, Dad in *The Sum of Us*, Jack in *The Weir*, Ruth in *The Pirates of Penzance*, and Brian in *Joe Egg*. He is currently making a career out of appearing as Caldwell B. Cladwell in *Urinetown! The Musical* when he is not directing regional productions of the very funny show about a future time when water becomes scarce and private toilets become unthinkable.

NATURAL BIO-IDENTICAL HORMONE REPLACEMENT

A Whole New Perspective...



The Sullivan Pharmacy works together with patients and physicians to provide customized bio-identical hormone replacement therapy in the best strength and dosage form to meet each individual's specific needs. We provide bio-identical hormone replacement for men and women. Please contact us for more information.



Goals of Bio-Identical Hormone Replacement Therapy

- ▶ Alleviate the symptoms caused by the natural decrease in production of hormones by the body
- ▶ Give the protective benefits which were originally provided by naturally occurring hormones
- ▶ Re-establish a hormonal balance
- ▶ Increase bone density
- ▶ Enhance libido

THE SULLIVAN PHARMACY



102 East Harrison • Sullivan, IL 61951

Located on the northeast corner of square in Downtown Sullivan

(217) 728-2331

Toll Free: 1-800-422-2364

Fax: (217) 728-2223 • E-mail: tsp@wireless111.com

Performance Company Profiles



Amy Lyn McDonald

Amy Lyn is thrilled to return to Sullivan, where she was last seen as Gertrude in *Seussical* and Claudia in *Nine*. West Coast credits: Kathy Selden/*Singin' in the Rain*, Flora/*Phantom*, *Sound of Music*, *Joseph*, *Victor/Victoria* and Larry Fuller's *Evita* (American Music Theatre-San Jose); Claire/*On the Town* (Foothill Music Theatre); Ruby/*Dames at Sea* (California Conservatory Theatre). Chicago companies: Marriott Theatre – Lincolnshire, Drury Lane – Oakbrook, Chicago Shakespeare Theatre, Theatre at the Center. With her M.F.A. in Dance from University of Illinois, she has enjoyed college dance instruction: De Anza College, Notre Dame de Namur University, Illinois Wesleyan, College of Lake County, and currently Lake Forest College and Elmhurst College. Thanks to Seth and Leonard for this wonderful opportunity, and love to Mom, Dad, Tom and all of her family!!



Christopher Moyer

Christopher Moyer was raised in Amish country, PA and enjoys cows, farm shows, and corn on the cob. Before his arrival to Sullivan, Chris spent the spring in AZ at the Broadway Palm with the talented cast of *Funny Girl*. He then spent a few weeks gallivanting around Pittsburgh with friends while also playing Rolf in *The Sound of Music*. Other favorite shows include *A Chorus Line*, *Candide*, *Blood Brothers*, *Evita* and *Miss Saigon*. Much of his artistic inspiration is due to the guidance of mentors Natalie Baker-Shirer, Grammy winner Robert Page, Metropolitan Opera singer Douglas Ahlstedt, and choreographers Chet Walker and Buddy Thompson. B.F.A. Carnegie Mellon. He sends his love to family and friends and a special thank you to Seth and Leonard for this exciting summer.



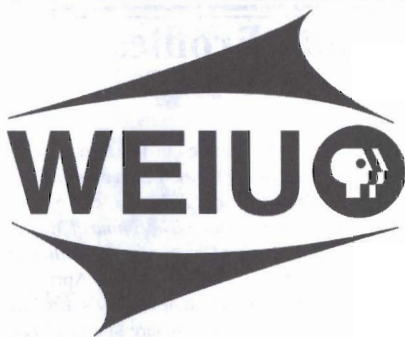
Drew Nellessen

Drew is thrilled to be back at The Little Theatre for a second summer. He is a Junior Musical Theatre Major and Dance Minor at Millikin University. His favorite Millikin credits include Oscar in *Sweet Charity*, Captain Albert Lennox in *The Secret Garden*, and most recently, Jerry/Daphne in *Sugar! the Musical*. At The Little Theatre, you might have recognized him as Judah in *Joseph...Dreamcoat*, Mendel/Bottle Dancer in *Fiddler on the Roof*, and ensemble in *42nd Street*, *Swing and Beauty and the Beast*. Other credits include Wagon Wheel Theatre, Six Flags Themeparks and a cabaret show in the Dominican Republic. He dedicates this summer to his mother, cancer free and living it up!!! Love to family and friends.



Lee Ann Payne

Lee Ann is thrilled to make her professional debut at The Little Theatre On The Square. After earning her MFA in Musical Theatre from San Diego State University, she has been fortunate to perform roles such as Annie in *Annie Get Your Gun*, Babe in *The Pajama Game*, Reno in *Anything Goes*, Maria in *The Sound of Music*, Io, Hilda and Genevieve in the New York debut of *Mother Wove the Morning*, as well as narrator in *Peter and the Wolf* at Lincoln Center. Seth and Marie - I can't thank you enough. Love to Mom. Dedicated to Dad.



**“Your New
Choice For
PBS”**

Channel 51
Mediacom Cable Channel 6
Insight Communications Channel 14
Consolidated Communications DVS Channel 6

www.weiu.net

**Charleston's
Radio
Station**



**“Hit-Mix 88.9 plays the widest
variety of the biggest and
best artists. Hit-Mix 88.9 is
the story of your life in music.”**

www.weihitmix.net



www.9thstreetproductions.net

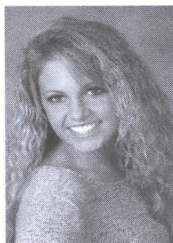
**YOUR
13**

**Consolidated Communications
has partnered with WEIU TV
to bring area residents
a new television channel
that will feature local sports,
community and civic
programming.**

**“YOUR 13” can now be viewed
exclusively on Channel 13
of Consolidated's Digital
Video Service (DVS)
channel line-up.**

www.your13.com

Performance Company Profiles



Elizabeth Pugh

Elizabeth is thrilled to be returning to The Little Theatre On The Square with her roles in *Thoroughly Modern Millie* and *Anything Goes*. She has been seen previously on The Little Theatre stage in *The Magic of Christmas*, *42nd Street*, *Swing!*, *Beauty and the Beast*, *Hello, Dolly!*, *Honk!*, *Annie*, *The Sound of Music*, *An Old Fashioned Christmas*, *It's Always Time for Christmas*, *Schoolhouse Rock Live Jr.*, *Music Man Jr.* and *Once On This Island Jr.* This past April she had the honor of playing Jasmine in the spring production of Disney's *Aladdin Jr.* She recently graduated from Mattoon High School where she has been president of her class and involved in student council for the past four years. She will be attending Millikin University in the fall with a major in Musical Theatre and a minor in dance. Elizabeth wants to thank Ms. Marie for being her friend and mentor for the past nine years. Elizabeth also wants to thank her family for always encouraging her to "Reach for the Stars!" Enjoy the show!



Lindsay Ayn Ray

A Sullivan native, Lindsay returned to her hometown after graduating from The American Musical and Dramatic Academy in New York City. Lindsay previously appeared at The Little Theatre in *Oklahoma!* and *The Pirates of Penzance*. In New York, Lindsay was a featured performer in numerous showcases, including *Witches of Eastwick* (Sukie), *Charlie Girl* (Charlie), *Savage In Limbo* (April) and *Proof* (Catherine). Lindsay will be returning to New York this fall to pursue her dream of becoming a Broadway Diva! Thanks to Mom, Dad, Nana, Granny and Aunt Mika for their undying love and support. Peace and enjoy the show!



Courtney Self

Courtney is excited to be back at The Little Theatre for the second summer in a row. She just finished playing Erma in *Anything Goes* at the Dutch Apple Dinner Theatre and Jennyanydots in *Cats* at the Broadway Palm. When not at the theatre this summer, Courtney will be found at the gym, or at Sister's eating the sweet potato chips. Favorite roles include Gladys in *The Pajama Game*, Peter in *Peter Pan*, Anytime Annie in *42nd Street* and Val in *A Chorus Line*. Courtney is originally from Topeka, KS and graduated from The Hartt School with a BFA in Music Theatre.



Nathaniel Shaw

Nathaniel is thrilled to be returning to Sullivan, and is extremely grateful to Leonard and Seth for making it happen. Nathaniel was previously seen at The Little Theatre as Ren in *Footloose*, Ephraim in *Seven Brides for Seven Brothers*, and a strange little hunchback in *Jekyll and Hyde*. He has also been seen regionally as Jesus in *Godspell*, Younger Brother in *Ragtime*, Cable in *South Pacific*, Riff in *West Side Story* and the Emcee in *Cabaret*. Nathaniel spent the last three years dancing with the internationally renowned Paul Taylor Dance Company. He wants to thank his incredible family and the love of his life, Parisa Khobdeh, for the undying love and support.



weather.com

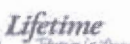


InsightMedia.

Local Television Advertising... the networks and programming your customers are watching.

217-373-7877

888-921-3630



Performance Company Profiles



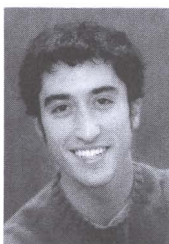
Sharon Slaughter

Sharon happily returns to the Little Theatre stage following a successful year as an itinerant adapted PE teacher. Over the years she has appeared in numerous LTOTS mainstage and children's shows and was proud to be a part of LTOTS' first S.T.A.R. touring group. Some of her favorite roles have included Lady Brockhurst in *The Boyfriend*, Miss Watson & the Strange Lady in *Big River*, Maude Dunlop in *The Music Man*, Bagheera in *The Jungle Book*, and Hilda in *Accidental Friends*. Sharon resides in Sullivan with her family. When not acting or teaching PE, she teaches music at Sullivan Preschool, sings and plays guitar with the burgeoning folk trio of Sharon, Steve & Tony, and works on completion of a CD of original music. Her life is full, and she is happy.



Lauran Stanis

Lauran Stanis, originally from Plano, TX, is thrilled to be back for another summer at The Little Theatre On The Square. You may...or may not remember her as the sexy dancer in *Swing*, or a tap dancing cow in *Jack and the Beanstalk*. Lauran admits to missing the prairie and all the friends she made while working in the S.T.A.R. program last year! Since her appearance last summer she has been seen at Broadway Palm West as Bubbles in *Funny Girl* and also at The Show Palace Dinner Theatre as Ginger in *The Best Little Whorehouse in Texas* and in their Christmas show. Lauran holds a BFA in Musical Theatre from Millikin University. Lauran sends love to her family back in Texas and is so happy to be back!



Ryan Strand

Ryan is a recent graduate of the College-Conservatory of Music at the University of Cincinnati with a BFA in Musical Theatre. He is delighted to be back at LTOYS after a one summer hiatus, where he has been seen as Jack Chesney in *Where's Charley*, Erik in *Grand Hotel*, Roger in *Grease*, and Ali Hakim in *Oklahoma!* At school he was seen as Homer Collins in *Floyd Collins*, Buddy Foster in *Side Show* and Ralph Werner in *Working*, among others, as well as being a featured guest performer with the Cincinnati Pops Orchestra and the Cincinnati Men's Chorus. Ryan will become a new member of Actors' Equity this summer and looks forward to becoming a starring actor!



Michelle Suzanne Valenti

Michelle Valenti is thrilled to be coming back for her second summer season at The Little Theatre On The Square! She has previously been seen on the LTOTS stage in *42nd Street*, *Beauty and the Beast*, *Once On This Island Jr.*, *Music Man Jr.*, and *Schoolhouse Rock Live Jr.* Michelle has just completed her freshman year as a BFA Musical Theatre Major at Millikin University. There, she was seen in *Cinderella*, *Cinderella* as the evil stepsister Cecily and in *Muli* as the potty deprived Just Little. Michelle is originally from Effingham, IL and would like to thank her family, Ms. Marie, and her close friends for always believing in her. Enjoy the show!



Michael Walker

Michael Walker is very excited to be working at The Little Theatre On The Square. National Tour: *Seussical The Musical* (Horizon) NYC: *The Mystery of Edwin Drood* (Princess Puffer), *The Bourgeois Gentleman* (Ensemble), *Shore* (Dave). Others: *Guys and Dolls* (Nathan Detroit & Nicely Nicely), *You're A Good Man, Charlie Brown* (Charlie Brown), *Man of La Mancha* (Sancho), *The Rocky Horror Show* (Eddie), and *The Tempest* (Stephano). Special thanks to all of his family and friends. ROLL TIDE!



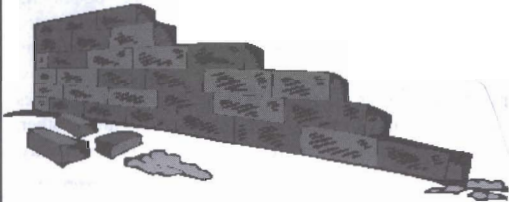
Scott State Bank

101 West Main
Bethany, IL 61914
217-665-3321

100 Main
Dalton City, IL 61925
874-2396

310 W. Jackson
Sullivan, IL 61951
728-7722

Member F.D.I.C.



Scott State Bank has been around a long time—since 1887 in fact. We're the county's oldest Bank under continuous management. With you, we've weathered the bad times—depression, recession, war. Read a history of Moultrie County and you'll continually see the Scott State Bank name, standing firm to help a growing community.

These are the building blocks of long-standing confidence from the community, mortared together by a fine efficient, caring staff—a staff with a blend of ages and backgrounds and interests to relate to your personal banking needs.

Our strong brick walls represent our stability, the open glass door our understanding and availability for the best possible banking services.

Sisters Restaurant

"On the Square"

Great Entrees...too many to list—come check them out!

Enticing Appetizers...

Mouth-watering desserts...

Fried Potato Chips

Fried Sweet Potato Chips

Fried Pickles

Veggie Quesadillas

Chicken Quesadillas



Amaretto Bread Pudding

Creme Brulee

Chocolate Seduction

Tiramisu

Cheesecake

Sisters Dessert Trio

Ice Cream Friazo



Reservations accepted

Summer Hours:

Tuesday–Saturday

Lunch 11 a.m.–2 p.m.

Dinner 5 p.m.–8 p.m.

Sunday

11 a.m.–2 p.m.

Closed Mondays



Specialty Coffees

Specialty Teas and Tea Latte

Raspberry Iced Tea

9 South Main, Sullivan, IL 61951

217.728.2717

Our party room is now open.

Large groups • Parties • Meetings • Special Events

Performance Company Profiles



Melissa Weaver

Melissa is thrilled to have the opportunity to perform on her hometown stage once again. *Thoroughly Modern Millie* will be her 10th show here at LTOTS. You may have previously seen her in *Annie*, *Wizard of Oz*, *An Old Fashioned Christmas*, *Snow White*, *Schoolhouse Rock Live Jr.*, *Once On This Island Jr.*, *42nd Street*, *Fiddler on the Roof* (Sprintze), and most recently in Disney's *Aladdin Jr.* (Iago). Cheerleading, show choir, a competition dance team, and maintaining a 4.0 GPA will keep her very busy next year as a sophomore at Sullivan High School. Melissa spends the rest of her little free time being a teacher assistant and taking numerous dance classes through the theatre's dance program. She would like to send a big thank you to Ms. Marie for always being there, encouraging, and showing her the way to stardom!



Jason Yau

Current New York resident but a native Texan, Jason is excited to be playing this role with this talented cast. North American Tour: *Miss Saigon* – directed by Broadway's Mitchell Lemsky and Shidan Majidi. Select Regional Theatre: *Big River*, *Crazy for You*, *Evita*, *Hair*, *Annie Get Your Gun*, *Hello, Dolly!*, *West Side Story*. Bachelor of Arts in Music from the University of Texas. He gives all the praise to God and would like to thank his Baba, Mommy and brother, Philbert for their constant love and patience. Proud member of Actors' Equity. www.jason-yau.com



Jillian Nyhan Zygo

Jillian Nyhan Zygo is honored to be working with Seth Reines again and performing at The Little Theatre. Jill has been traveling all over the country for the past year playing Ado Annie on the *Oklahoma!* National tour, but left her gypsy lifestyle behind to play Fanny Brice in *Funny Girl* at the Broadway Palm in Mesa, AZ. This proud native New Yorker would like to thank her amazing husband for his constant love and encouragement! www.thezygos.com



J. Michael Zygo

A Rochester, NY native, this SUNY Geneseo graduate is proud to be making his Little Theatre debut. Most recently, he was seen as Will Parker in the 1st National Tour of *Oklahoma!* where he was fortunate to play opposite his beautiful wife Jill as Ado Annie. Mike would like to thank Seth for giving him the opportunity to work with his wife again! Thanks to God for all the wonderful blessings in his life. Thanks also to his infinitely supportive family and his amazing wife. "I don't know where I'd be without you!" www.thezygos.com Mike also has aspirations of becoming a world famous country singer. He currently has a full band album of original music (co-written/performed with Harold Barnard II) available for purchase at www.zygoandthedeuce.com, or from Mike personally.



Located in
Amish Country

208 West Jackson St.
Sullivan, Illinois 61951
Phone - 217-728-3166

- ▶ Restaurant & Bakery
- ▶ Amish Oak Furniture
- ▶ Gifts & Collectables

Market Hours

Mon-Thur 10 am-7 pm

Fri & Sat 10 am-8 pm

Restaurant Hours

Mon-Thur 7 am-7 pm

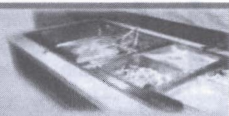
Fri & Sat 7 am-8 pm

Fri Night - Catfish on Buffet/Menu

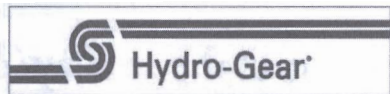
Sat Night - Prime Rib

(All You Can Eat) 12.95 w/Buffer

Closed on Sunday



Visit our web site
www.oldschoolmarket.com



Hydro-Gear is proud to support the community by its contributions to education and the arts.

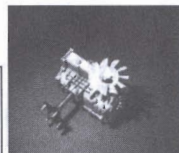
A World Leader in Hydrostatic Transmissions

Since 1991 Hydro-Gear, of Sullivan, Illinois, has led the field in the design, manufacture, sales and service of quality hydrostatic transaxles for the lawn and garden industry. The consumer has come to rely on the Hydro-Gear name for transaxles that provide the homeowner with greater maneuverability to take care of those hard-to-mow areas.

For riding mowers from the backyard to the baseball stadium there is one name to remember:

Hydro-Gear®

We set the wheels in motion.®



Pearman

PHARMACY



116 West Court Street
Paris, Illinois 61944
217.465.8455

Steve Benefiel, R.PH.
Tom Hebermehl, R.PH.
Dustin Melton, R.PH.
Denise Allanson, R.PH.

Find us on the south side of the square...

*The stage is not merely
the meeting place of
all the arts, but it is
also the return of
art to life.*



Oscar Wilde (1854-1900)

Real answers for real financial security

Auto | Home | Life | Health | Farm



Steve Bonnett
1102 W. Jackson
Sullivan, IL 61951
217-728-2591



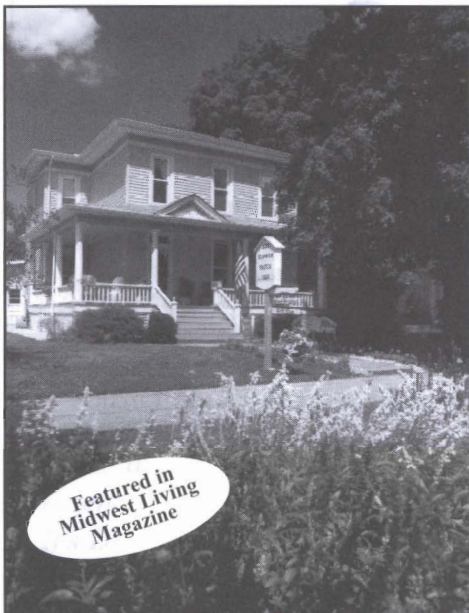
Gene Bryant
1102 W. Jackson
Sullivan, IL 61951
217-728-2591



Mark Luce
205 E. Commercial St.
Strasburg, IL 62465
217-644-2203

COUNTRY

Insurance & Financial Services



Featured in
Midwest Living
Magazine

The Flower Patch Bed & Breakfast

A Victorian Home with
Public Gardens, Gift Shop
& Artist-in-Residence

Bill & Lynne Harshbarger, Hosts

225 East Jefferson
Arcola, Illinois 61910
217-268-4876
www.illinoisads.com

Gift Certificates Available

Only 20 minutes from Sullivan



Hagen's Family Pharmacy

Conveniently located on the square

Monday through Friday, 8 a.m.–6 p.m.
Saturday, 9 a.m.–4 p.m.

Bob Hagen, R.P.H.
Cathy Hagen R.P.H.



Proud supporter of
The Little Theatre On The Square performances

217.728.7388 • 8 East Harrison Street • Sullivan, IL 61951

Anything Goes

Music and Lyrics by Cole Porter

Original Book by P.G. Wodehouse & Guy Bolton
and Howard Lindsay & Russel Crouse

New Book by Timothy Crouse & John Weidman

Originally Produced by Lincoln Center Theatre, New York City

Scenic Design
Kevin Bautch

Lighting Design
Diane Kinkennon

Costume Design
Greg Hiatt

Sound Design
David Scobbie

Production Stage Manager
Angela Grimaldi*

Music Direction by
P. Jason Yarcho

Costume Coordinators
Jared Nell & Kristina May

Directed & Choreographed by
Millie Garvey

The Cast
(in order of appearance)

Elisha Whitney.....	Patrick McCarthy*
Fred.....	C.K. Edwards
Billy Crocker.....	Jeff Kready
Reno Sweeney.....	Lee Ann Payne*
Captain.....	Nathan Albert
Purser.....	Matthew Chmiel
Reporter.....	Lindsay Ray
Photographer.....	Drew Nellesen
Purity.....	Barbie Diewald
Chastity.....	Michelle Valenti
Charity.....	Ann Ehaes
Virtue.....	Elizabeth Pugh
Minister.....	Leonard A. Anderson
Luke.....	Ryan Strand*
John.....	Christopher Moyer
Hope Harcourt.....	Rebecca Kloha
Mrs. Evangeline Harcourt.....	Glory Kissel*
Lord Evelyn Oakleigh.....	Richard Marlatt*
G-Man.....	C.K. Edwards
Erra.....	Courtney Self
Moonface Martin.....	Michael Walker
Woman in Bathchair.....	Sharon Slaughter
Sailors.....	Ryan Strand*, Christopher Moyer, C.K. Edwards, Drew Nellesen

ssdc

The Director/Choreographer is a member of the
Society of Stage Directors and Choreographers,
Inc., an independent national labor union.

* Members of Actors' Equity Association, the union of professional actors and stage managers in the United States.

Anything Goes

Musical Numbers

ACT ONE

<i>I Get a Kick Out of You</i>	Reno
<i>There's No Cure Like Travel</i>	Captain, Purser, Sailors
<i>Bon Voyage</i>	The Company
<i>You're the Top</i>	Reno, Billy
<i>Easy to Love</i>	Billy, Hope
<i>The Crew Song</i>	Eli Whitney
<i>There'll Always Be a Lady Fair</i>	Sailors
<i>Friendship</i>	Reno, Moon
<i>It's Delovely</i>	Billy, Hope
<i>Anything Goes</i>	Reno and Company

15 minute Intermission

ACT TWO

<i>Public Enemy Number One</i>	The Company
<i>Blow Gabriel</i>	Reno and Company
<i>Be Like the Blue Bird</i>	Moon
<i>All Through the Night</i>	Billy, Hope
<i>The Gypsy in Me</i>	Evelyn
<i>Buddy, Beware</i>	Erma
<i>Finale (I Get a Kick Out of You)</i>	The Company

Anything Goes is presented by arrangement with
Tams-Witmark Music Library, Inc.

560 Lexington Avenue, New York, New York 10022

"The videotaping or other video or audio recording of this production is strictly prohibited."

Anything Goes Credits
continued from page 25

Orchestra

Conductor/Piano.....	P. Jason Yarcho
Asst. Musical Director/Keyboards.....	Steven Zumbrun
Percussion.....	Terence Mayhue
Reeds.....	Andrew Schurman
Trumpet.....	Brian Warszona
Trombone.....	Chris Alexander
Violin.....	Han-Yuan Wang

Production Staff

Production Manager.....	Jenn Scheller
Technical Director.....	Kevin Bautch
Assistant Stage Managers.....	Emilee Buchheit, Emily Wilson
Dance Captain.....	Drew Nellessen
Master Carpenter.....	Loren M. Pratt
Carpenters.....	Harrison F. Austin, Brian "Traz" Sharron
Swing Technicians.....	Matthew Chmiel, Mikhaila Leinbach
Props Master.....	Carl L. Sage
Charge Scenic Painter.....	Alex M. Gaines
Master Electrician.....	Joe Spratt
Sound Engineer.....	David Scobbie
Costume Shop Foreman.....	Jared Nell
Stitcher.....	Kristina May
Wardrobe.....	Tyler Whitecotton
Follow Spot Operators.....	Amber Cole, Hannah Cole



Sullivan Country Club



Lovely Country View • Delicious Food • Ruthie's Famous Pies

We now accept credit cards

Sunday Brunch Buffet - 11am to 1pm

Tuesday through Sunday Lunch - 11am to 1:30pm

Tuesday through Saturday Dinner - 5pm to 9pm

Reservations preferred (217) 728-7232



GORDON'S *Custom Framing*

*"We Support
the Art."*

— Since 1982 —

1613 Charleston Ave., Trinity Towers, Suite 3 • Mattoon, IL. 61938
Cell: (217)460-1183 • Home: (217)797-6974

Artistic Company Profiles

Kevin Bautch...Scenic Designer/Technical Director

Kevin Bautch (Season Technical Director and Scenic Designer for *Do Black Patent Leather Shoes Really Reflect Up?*, *Anything Goes*) is happy to be joining The Little Theatre On The Square staff this season after serving as Festival Technical Director and Scenic Designer for *The Scarlet Letter* for Festival 56 in Princeton, IL last summer. Kevin completed his MFA in Design from Illinois State University this spring. His recent designs include *Romeo and Juliet*, *Oklahoma!* and *Noises Off* at Festival 56, and *As You Like It* and *Marat/Sade* at Illinois State University.

Kevin Depinet...Scenic Designer/Lighting Designer

Mr. Depinet just recently graduated from Illinois State University where he received his MFA in scenic design. This past year he spent studying with Ming Cho Lee at the Yale School of Drama. He has been designing professionally for the past six years and worked at numerous theatres across the country. He now resides in Chicago where he is a freelance scenic and lighting designer. Mr. Depinet is excited to be in Sullivan, Illinois this summer and can't wait to be part of the theatre's great legacy.

Alex M. Gaines...Scenic Designer

Mr. Gaines is very eager to join The Little Theatre On The Square for the first time. In the fall, he will begin his senior year at Webster University's Conservatory of Theatre Arts, pursuing a BFA in scenic design and technical direction. Educational credits include set designs for *Red Ink* and *String of Pearls*, both newer works, and professional credits include set designs for *Forever Plaid* and *The Odd Couple* at the Ozark Actor's Theatre in Rolla, MO and work for the Alley Theatre in Houston, TX and the International Theatre of Vienna in Austria.

Millie Garvey...Director/Choreographer

Millie Garvey (Director/Choreographer-*Anything Goes*) returns to Sullivan having just completed productions of *Kiss Me Kate* for Arrowrock-Lyceum Theatre, *Dreamgirls* and *Caroline or Change* for the St. Louis Black Rep, and *A Chorus Line* for Stephens College. Last season in Sullivan she directed and choreographed the production of *Fiddler on the Roof*. Other productions include *Evita* and *West Side Story* for the Broadway Palm West in which she won an Arizoni for Best Choreography 2003. She also did *Music Man* and *Fiddler on the Roof* for Casa Manana in Fort Worth, Texas. Millie's career has spanned over twenty-five years and one hundred productions, including three world premieres, *Monky Business*, *Camila* and a children's opera entitled *Joshua's Boots*. Her work has been seen in the Opening Ceremony of the Tenth Pan Am Games, the 35th Anniversary of Mary Kay, the 100th anniversary of the I.B.E.W., the Castle Christmas show at Disney World, and in 2 award winning music videos. Next, she will go to Okoboji, Iowa for *Will Rogers Follies*. Millie lives in St. Louis with her husband of twenty-five years, Whit Reichert.

Angela Grimaldi...AEA Stage Manager

Angela has worked from New York (where she was born and raised) to Tennessee (at Dollywood), and everywhere in between (thanks to a tour with Theatreworks/USA). Now living in the Knoxville area, this is her first season with The Little Theatre On The Square. Favorite shows include *Macbeth*, *Rounding Third* (Kentucky Repertory Theatre), *Christmas Carol* (Clarence Brown Theatre), *Jesus Christ Superstar*, *42nd Street* and *Godspell* (various Long Island theatres). When not working behind the scenes in theatre, she is a photographer.

Harrison Street Inn

Offering Spacious Rooms Each Featuring

- Private Bath & Hairdryer
- Cable TV & Refrigerator
- Private Telephone Line
- Coffee Maker & Supplies
- Private Entrance

204 E. Harrison Street
Sullivan, Illinois 61951
217-728-4550

Discover, Visa and Mastercard Accepted



One Block East of The Little Theatre On The Square
Owned and Operated by Dr. Tom & Emilee Best

O'Malley's



Non Smoking Dining Room Available

- ☘ STEAKS
- ☘ SANDWICHES
- ☘ ENTERTAINMENT

BREW &
STEW

217-728-9202

Hours: Tuesday - Saturday 11:00 a.m. - 1:00 a.m.

Artistic Company Profiles

Diane Kinkennon...Lighting Designer

Diane joins The Little Theatre On The Square from Illinois State University, where she recently received an MFA in lighting design. Her recent designs there include *As You Like It*, *Marat/Sade*, *Pride's Crossing* and *The Marriage of Figaro*. She has worked at Illinois Shakespeare Festival and as lighting and sound designer at Greenbrier Valley Theatre in Lewisburg, West Virginia. A native Tennessean, Diane has worked on numerous productions for the University of Memphis and has been a guest designer for Theatre Memphis' production of *The Last Five Years* and *The Laramie Project* at The Circuit Playhouse.

Patrick McCarthy...Director

See Patrick's bio under Performance Company Profiles on page 12.

Jamal McDonald...Choreographer

Jamal McDonald is a graduate of Ithaca College. He was Assistant Choreographer and Assistant Director of the National Tour of *The Full Monty* as well as at Gateway Playhouse. Other National Tour: *Miss Saigon*. Regional Credits include *The Wiz*, *Big River*, *Bat Boy* and *Gypsy*. He sends his love to his mother and sister back home in Los Angeles, California.

Ann Nieman...Director/Choreographer

Ms. Nieman returns to Little Theatre On The Square where she previously directed and choreographed the 2005 production of *42nd Street*. Ms. Nieman has directed and choreographed over 50 shows for respected theatres throughout the U.S. Favorite productions include *Jesus Christ Superstar*, *Evita*, *Little Shop of Horrors*, *West Side Story*, *Joseph...Dreamcoat* and *Me & My Girl*. She has been the recipient of the Dallas Theatre League's Award for Outstanding Choreography of a Musical for the production of *Sweet Charity* at Lyric Stage in Texas. Off-off Broadway credits include *In the Name of God...or Honk if You Love Satire* and *Wind in the Willows*. Internationally, she has choreographed a European tour of *42nd Street*. A native of Texas, Ms. Nieman received her B.A. in theatre from North Texas State University, and currently resides in New York City.

Laura Schutter...Choreographer

Laura Schutter is pleased to be returning to The Little Theatre where she was an intern at age sixteen many years ago. Since age sixteen, she went on to Chicago and studied under Seth Reines at Roosevelt University. Now living in New York, Laura has performed on Broadway, National Broadway Tours and London's West End. Her most recent credits include: Millie in the Broadway Tour of *Thoroughly Modern Millie*, Broadway productions of *Kiss Me Kate* and *The Scarlet Pimpernel*, and the National Tours of *Parade*, *Showboat* and *Kiss Me Kate*. Regionally, Laura has performed and choreographed throughout the United States and Canada. Some of her favorites include: *The Spitfire Grill* (DayTony nomination), *42nd Street*, *Spring Awakening*, *Into the Woods* and *Gypsy*. She would like to thank Seth for another fun and fabulous opportunity here in Sullivan. Thanks also to Mom (who taught her every dance step she knows), Dad and Andrew.

Joe Spratt...Lighting Designer

Mr. Spratt is delighted to be in Sullivan as the Master Electrician for TLTOT's 2006 Summer Season and the Lighting Designer for *Godspell*. Originally from Rock Island, Illinois, Mr. Spratt's credits include Lighting Designer for *Ragtime*, Sound Designer for the Ghostlight Theatre Company, Stage Manager for Genesis Guild Classic Theatre of Rock Island, and freelance technician for Circa 21 dinner playhouse, among many others. He moved to Decatur, Illinois in 2004 to begin his Education as a B.F.A. Theatre Tech/Design candidate at Millikin University. Mr. Spratt looks forward to continuing his education, and perfecting his craft, and thanks TLTOT for the opportunity to do both. Enjoy the show!



&



announce
Storyteller Theatre
Auditions

WHO CAN AUDITION? Any child in grades 1 through 8

WHEN? Sundays, October 1 & 8, 2006

WHERE? Decatur Area Arts Council, 125 N. Water St.

INFORMATION? Call the Decatur Park District at

(217) 422-8535 after Sept. 1 to get an audition appointment



Illinois
ARTS
Council
AN AGENCY OF
THE STATE OF ILLINOIS

This program is
partially sponsored
by a grant from the
Illinois Arts Council

And coming September 22 ...

SWING NIGHT!

Join the Decatur Park District at
Nelson Park Pavilion for a night of
swing music and dancing
Free and open to the public



Artistic Company Profiles

Kathryn Wagner...Costume Designer

Kathryn Wagner is currently an Assistant Professor and Resident Costume Designer at the Department of Theater at Southern Illinois University Carbondale. Most recent design projects include *A Funny Thing Happened On The Way To The Forum* and *Noises Off*—both for SIUC. Ms. Wagner returns to The Little Theatre having designed *Fiddler on the Roof* last season. Other Little Theatre shows include *Hello, Dolly!*, *The Boyfriend*, *Oklahoma!*, *The Pirates of Penzance* and *Grease*. Other recent credits include *My Three Angels* (University of Illinois, Summer Studio Theatre Company), *My Fair Lady* (SIUC McLeod Summer Playhouse), *The Green Bird* and *On the Verge* (SIUC), *The Glass Menagerie* (UIUC Summerfest) and *A Man For All Seasons* (Peninsula Players). Prior to coming to the Midwest, her work was seen in many New York area theatres including McCarter Theatre, Lamb's Theatre Company and the New Jersey Shakespeare Festival. Ms. Wagner holds a BFA from the Goodman School of Drama, an MFA from Rutgers University, and is a member of United Scenic Artists, Local 829.

John P. White...Costume Designer

John P. White (Costume Designer-*The Full Monty*) is excited to be returning to Sullivan and The Little Theatre On The Square. **At TLTOTS:** *Chicago, Honk!*, *Mame*, *The Lion in Winter*, *Victor/Victoria*, *Jekyll and Hyde*, *Christmas Carol*, *Joseph and the Amazing Technicolor Dreamcoat*, *Annie*, *Music Man*, *Oliver*, *Christmas from the Heart* and *Nuncrackers*. Currently, John is the Costume Design assistant at Actors Theatre of Louisville in Louisville, KY. Prior to that, he was the resident costume designer for Derby Dinner Playhouse in Clarksville, IN. He has also designed costumes for Mill Mountain Theatre (Roanoke, VA), Dutch Apple Dinner Theatre (Lancaster, PA), Broadway Palm Dinner Theatre (Naples, FL), Broadway Palm West (Mesa, AZ) and Music Theatre Louisville.

P. Jason Yarcho...Musical Director

Jason is thrilled to be back in Sullivan for another summer season. He has served as Musical Director for The Little Theatre On The Square for the past two years, conducting their productions of *The Boyfriend*, *Where's Charley?*, *42nd Street*, *Swing!*, *Beauty and the Beast*, *Fiddler on the Roof* and *Joseph and the Amazing Technicolor Dreamcoat*. He also served as Musical Director for their educational program's production of *Once on This Island, Jr.* as well as conductor/arranger/composer for their past two Christmas production's *It's Always Time For Christmas* and *The Magic of Christmas*. He recently musical directed *I Do! I Do!* for Virginia Musical Theatre and served as substitute conductor for the Broadway Palm West's production of *Aida* in Mesa, AZ. Last fall, Jason was the Musical Director of the world premiere of Seymour Barab's opera *License to Marry* directed by famed opera director, Dorothy Danner. He received his BM in Piano Performance from Eastern Illinois University. While at Eastern he was winner of the Eastern Symphony Orchestra's concerto competition, playing Gershwin's Concerto in F and Tchaikowsky's Concerto No. 1 in Bb minor. He was voted "Outstanding Performer" for two consecutive years by Eastern's music faculty. Mr. Yarcho has served as Musical Director/keyboardsist for nearly 40 productions. He is also an active vocal coach having coached several students and professionals. Mr. Yarcho was quoted as being "one of the best musical directors around" by the Illinois Times.

PRO-AG



CONSULTING®, LLC

SOIL FERTILITY PROGRAM

(800) 879-2297

WINDSOR, ILLINOIS

Oakland
(888) 305-4411

Bloomington
(888) 879-2297

Montrose
(888) 732-2530

McLeansboro
(618) 643-4060

Hull
(217) 656-3474

Bloomington
(877) 776-2240

West & Company, LLC
Certified Public Accountants
& Consultants

West Financial Group, LLC
Financial Advisors

Securities Offered Through 1st Global Capital Corp.
Member NASD SIPC

Offices In

Sullivan	728-4307
Mattoon	235-4747
Effingham	347-5181
Greenville	(618)664-4848

WOOD & MAYBERRY

Attorneys at Law

Steven K. Wood
Steven W. Mayberry

200 West Harrison
Sullivan, Illinois 61951

Telephone: 217-728-7369
Fax: 217-728-4781

City of Sullivan

*After all the hard work,
rehearsals, wardrobe and
make-up for this exciting
theatre season...when the
curtain goes up ---
Break a Leg!*



SULLIVAN CIVIC CENTER

P.O. Box 145
600 N. Washington, Sullivan, IL 61951

Fax • 217-728-8717

Phone • 217-728-4541

**Complete Swimming, Fitness &
Recreational Facilities**



The Little Theatre On The Square...

Through The Years



This year The Little Theatre will celebrate its 49th year bringing live performances to the prairie. Two years ago, the extensive renovation project was completed offering a beautiful updated, expanded facility in which to enjoy the arts.

Founded by Guy S. Little, Jr., a man who was fulfilling his lifelong dream to operate a quality professional theatre, The Little Theatre On The Square first raised its curtain in 1957 for a lively performance of *Brigadoon*. Mr. Little ran the theatre as a commercial venture through 1978. During that time more than 175 famous stars performed on its stage, including Mickey Rooney, Alan Alda, Ann Miller, Don Ameche, Betty Grable, John Carradine, Leonard Nimoy and Forrest Tucker.

After 22 years of producing outstanding theatre in Sullivan, Mr. Little moved on to pursue other ventures. In 1981, The Little Theatre On The Square began operating as a not-for-profit corporation, governed by a Board of Trustees who represented its regional market area in Central Illinois.

The Little Theatre On The Square, Inc. later purchased the theatre building from Mr. Little. The following year it purchased and renovated the adjoining building for its ticket office, public restrooms and administrative offices. The theatre continued to grow, and added amenities for its patrons and production company. In 2000, the theatre purchased another building for rehearsal space, a dance studio and apartments to house the company. Another building was purchased in 2001 and converted into a technical production facility.

In 1997, the theatre, in cooperation with the City of Sullivan Civic Center, started an educational outreach program to cultivate theatre arts. It began by teaching jazz, tap and ballet. In 2001, drama classes were added. The outreach program now has over 275 students.

In January, 2004 the educational outreach program added a touring program called S.T.A.R. which stands for Students' Theatre Arts Reach. Taking a play on the road, S.T.A.R. offered their performance to area schools. This spring, S.T.A.R. toured two productions and reached over 26,000 students.

Since 1981, The Little Theatre On The Square has played to well over 600,000 admissions, including over 130,000 admissions to the Theatre For Young Audiences series.

We hope you enjoy The Little Theatre for many years to come!



General, Thoracic & Vascular Surgery
 Gastrointestinal Endoscopy - Laser
 Endoscopic Surgery - Surgical Oncology
 Breast Care Center

Ruben Boyajian, M.D., F.A.C.S.
 Kevin Malone, M.D., F.A.C.S.

EFFINGHAM SURICIAL ASSOCIATES, S.C.

900 W. Temple - Suite 101
 Effingham, IL
 Phone: 217-347-2500



Anderson Electric

BLOOMINGTON • DANVILLE • MATTOON • SPRINGFIELD

Electrical Contractors Serving Commercial,
 Data Com, Health Care, Industrial and Power
 Generating Customers Since 1918.

1921 Oak Ave, Mattoon, IL 61938
 Ph. 217-234-7476

Robert J. McClain, Vice President/Mattoon
 www.anderson-electric.com

MARVIN KELLER



- Illinois Based
 - Truckload Carrier
 - General Freight

Supporting the Arts
 in Our Community

217-728-9800

112 N. Main St. - Sullivan, IL 61951
 www.kellerlogistics.com

*Hart & Mara
 Van Deusen*



R RadioShack.
 You've got questions. We've got answers.™

•Sporting Goods • Camping • Gifts
 7 a.m. - 7 p.m. Mon. - Fri. • 8 a.m. 6 p.m. Sat. • 12 - 4 Sun.

Johnstown Mall
 Shelbyville, Illinois 62565
 (217) 774-2723

Lakeland Plaza
 Sullivan, Illinois 61951
 (217) 728-4100



MID-STATE TANK CO., INC.

PO. Box 317 • Sullivan, IL 61951

PH: 217/728-8383 • FAX: 217/728-8384 • TOLL FREE: 800/722-8384

Kadoozies

Exceptional Jewelry, Toys, Gifts

Stop in and see our
 new line of clothing
 and shoes

Kadoozies is a little bit of
 fashion, a whole lot of fun!

On the square in Sullivan, Illinois

(217) 728-7220 Summer Hours: Tues-Sat 10 am - 8 pm

Applauding the Past—Directing the Future

We want to salute the many generous donors to our **Capital Campaign**. Through their support, The Little Theatre On The Square is able to continue the tradition of live, professional theatre in Central Illinois, as well as expand its offerings through its Educational Outreach programs. Each of you has our deepest appreciation for making this longtime dream come true!

Encore Society **\$200,000 +**

Archer Daniels Midland Company
State of Illinois

Producer's Society **\$100,000-\$199,999**

City of Sullivan
Consolidated Communications

Director's Society **\$50,000-\$99,000**

Agri-Fab
First Mid-Illinois Bancshares, Inc.
Hydro-Gear
Dr. James K. & Karen S. McKechnie

Designer's Society **\$25,000-\$49,999**

Anonymous Board Members
Ken & Deb Best

Choreographer's Society **\$10,000-\$24,999**

ADM Foundation
Charles & Linda Adams
Anonymous Donors
Bank One
First National Bank of Sullivan
Nina & Philip Martin -
In Honor of Art & Marnie Palmer
Gary & Tess Melvin
Mervis Industries, Inc.
Parke Warehouses
Tami & Don Robinson
Scott State Bank
United Graphics, Inc.
Ron & Sharon White

Actor's Society **\$5,000-\$9,999**

A.E. Staley, Jr. Foundation
Leonard & Carol Anderson
John & Carol Benda
Steve & Debbie Benefiel
Dr. Joseph & Christine Borreggine
Central Illinois Physical Therapy
Bob & Cathy Hagen
Jon & Jo Ann Laible
David & Mary Martell
Wayne & Patti Meinhart
Pearman Pharmacy, Inc.
John Schultz Family
Sam & Barb Scott
Jimmy T. & Kathryn L. Stewart
Mary L. Storm

Spotlight Society **\$1,000-\$4,999**

American Express Foundation
BKD, L.L.P.
Dr. Tom & Emilee Best
Christopher Bracken
Dick & Sue Ann Cain
Charles & Donna Coffey
Bruce & Mary Beth Condit
Gery & Cheryl Cordin
Kevin & Bonnie Corley
Steven K. Foglia
Don & Carolyn Hackerson
Les & Ellen Hall -
In Memory of Kay Kinery
Marty & Lori Harbaugh
Hardware State Bank
Tom & Peggy Hargis
Sisters/Bud & Pam Harris
Dr. Mack & Margaret Hollowell
Holmes, Radford & Avalon, Inc.
Don & Pam Jesse

continued on page 37

Applauding the Past—Directing the Future

Spotlight Society *continued*

Mary Ann & John Koucky
Mr. & Mrs. Michael Martin
McMullin-Young Funeral Home
Charlene Oberlin
Bob & Lana Pancoast
Mary Lou Randolph
Reed Funeral Home, Ltd.
M. Seth Reines
Otto & Lisa Rincker
William S. & Kathleen Rowland
SBC Foundation
The Samuel Family Foundation
Mr. & Mrs. Dennis Sandschafer
Marilyn Sears
Dallas & Nancy Seitz
Siemer Milling Company
Henry M. Staley Charitable Trust
Rick & Cindy Steward
Lew & Patty Stiff
Jim & Judy Yockey

Center Stage Society \$500-\$999

Schenck & Margaret Brooks
Michael Fortner & Leanne Bales
C. Michael & Beth A. Hewing
Anne Higley & Eric Benson
Robert L. Hills –
 In Memory of Patricia Lowe
John & Suzanne Lechman
Tom & Mary Little –
 In Memory of E.M. "Euck" Chastain
Psi Iota Xi II Association
Paul & Anna Jane Sager
Mike & Linda Sullivan
Troy & Patti Swinford
Verizon Foundation
Richard & Linda Voltz
Ron & Sandra Ware

The Chorus Society \$250-\$499

Anonymous Donors
Carl & Shirley Bruegger
Rich & Sharon Buckler

Mr. & Mrs. Merle W. Chapman
Buck & Shana Condiff
Bob & Nancy Elder
First Neighborhood Bancshares, Inc.
Don & Jan Grewell
Marilu & Hewitt Hafer
Mr. & Mrs. Richard L. Hettinger
Mary Lou Hubbard & Don Dawson
Dennis & Mary Hutchings
Irwin Telescopic Seating Company
Juanita E. Jennings
Bob & Debi Johnston
Donna M. Kobitter –
 In Memory of Ralph L. Kobitter
Claire Krukenberg
Jeanne & Fred LaBree
Jan & Lee Lauderdale
Henry & Dianne Merz
In Memory of Beth Moss
Nancy Newell
Psi Iota Xi, Theta Psi, Bethany
Denis & Lori Roche
Mabel E. Shuman
Ada T. Songer –

 In Memory of E. Lowell Songer
Russ & Marge Stark
David & Linda Sudkamp
Mark & Debbie Vandermyde
Watts Copy Systems
Betty E. Zeaman
Becky & Claire Zimmerman,
 Ruth (Zimmerman) Kampwerth

The Extras \$10-\$249

Anonymous
John & Cathy Anderson
Lyetta Awalt –
 In Memory of Fred L. Awalt
Cathy Babbs
Randy & Marcy Baird
Roger & Eileen Baker
Mr. & Mrs. Gene Barkley
Norma Jean Baarnard
Ronald E. & Carol Batterham
Joan Beetle

continued on page 38

Applauding the Past—Directing the Future

The Extras *continued*

Doug & Jan Belles
Doug & Sally Bock
Mildred & Wayne Bohlen
George & Winona Bolinger
James & Leona Bolles
Mark & Carol Bomball
Jim & Marlene Bray
Jerry & Gail Brenner
Tom & Jackie Brinkoetter
Sally & David Brown
Don & Gerry Brown
Helen Brown
Howard & Helen Brown
David & Ellen Bruce
Mike & Vicki Budde
Warren & Jo Burgard
Larry Cannon
Don & Joan Carnes
Norma Jean Carter
Gail Casey
Clara L. Clark
Ed & Mary Lou Cookson
Dr. & Mrs. William Gene Corley
Carl & Janice Cox
Ken & Elaine Cox
Walter & Mary Dannewitz
Beverly Dean
Mary Beth Dedman
The DeLong Family
Donald G. & Karen Doty
Marilyn Dufford
Chuck & Sharon Eberly
Fay Eddings
J. Andrew Edwards
Duane & Beverly Ehler
Eleanor Elliott
Judy Enis
Esther Fessant
Dale & Judy Ford
Robert & Robin Fossum
Todd & Vicky Foster
Alyne S. Galloway & Family
 In memory of Lowell L. Galloway
Gateway Wagoneers
Jim & Jerry Geekie
John R. & Sandra A. Geis

James Neil Gentry
Michael & Melanie Gibala
GlaxoSmithKline Foundation
Barbara A. Glover
Pauline W. Goldstein
Cindy Gollus
Patricia A. Graven –
 In Memory of William G. Graven
Dr. William & Susan Grieve
Mike & Linda Grose
Barbara Hall
Jim & Leigh Hammer Family
Bob Hantel
Bob & Glenda Harris
Ron & Nedra Hash
Elmer & Virginia Hawkins
Bill & Susan Seaforth Hayes
Hefner, Eberspacher & Tapella –
 Attorneys at Law
John & Bonnie Hefner
Henry Heiland
Karen S. Heintzelman
Isabel Henderson
Ramona Henricks
Dean & Veva Henson
James & Florence Holaday
Joyce Holste
William & Selma Horton
Leon & Karen Huffmaster
Bob & Laura Hussey
Dorothy Jackson
William Michael & Jacqueline Joines
Ben Jones
Shirley & Robert Karraker
Mike & Ruth Keown
Thomas & Rebecca Kerkhoff
Mr. & Mrs. Hayden Kessinger
Walter & Marlene Kincaid
Daniel & Laurie King
Jim & Lillian Korous
Kathleen Kunzeman
Tod & Marge Lancaster
Dorothy A. Langford
Norma Lansing
Sandra Lautrup
Mr. & Mrs. Howard Lawrence

continued on page 39

Applauding the Past—Directing the Future

The Extras *continued*

Carl Lebovitz—

In Memory of James K. Lively

Robert & Trudy Lewis

Robert L. Lewis

Beryl A. Linders

Donna Livingston

Mary Jane Lock

Charles Lunceford

Diane Mackey

In Memory of Bill Madden

Nancy Mains

George & Marion Marquis

Jack & Margaret McCoskey

Doug, Kelly & Megan McDevitt

Virginia McKinney

Eleanor Means

Janet Meier

Michael & Dorothy Merry

Joyce Miller

Linda & Michael H. Miller

Mr. & Mrs. John Richard Mills

George & Linda Mitchell

Eleanor Moma

Betty R. Monroe

Irene Moody

Melody Moore

Pam Morgan

Judy Murphy

William & Rose Mary Myers

Dan & Susie Niemerg

Thomas & Jo Ann Niemerg

Betty Noffke

Dennis & Judy Ozier

Barbara Pals

Lindsey & Linda Parrish

Ed & Nancy Pazdzior

Kurt & Brenda Pierce

Doug & Linda Poe

Leo & Anne Pondelick

Gene & Joyce Prince

R.R. Donnelley Foundation

Phyllis J. Ranney

Jerry & Marsha Robbins

Wanda Roberts

John & Nancy Royse

Ken & Eva Ruble

Richard & Yvonne Schroeder

Mr. & Mrs. Donald L. Scoles

Florence Seales

Mr. & Mrs. D.O. Shank

Lois J. Shelton

In Honor of

Maurice & Rose Mary Shepherd

Mary L. Shute

Mark & Renee Smith

Lester & Sharon Southard

Lowell & Theresa Spurgeon

Rhodell & Gladys Sterchi

Scott & Jan Stevens

Arthur & Lois Strom

Bill & Judy Sumner

Nancy C. Tennant

Terry J. Titus

Janet Tolly

Cora Ruth Turner

John & Susan Tynan

Curt, Peggy, Ashley &

Michelle Valenti

Les & Bobbie Vaughan

Dale & Virginia Vogel

Todd & Lynelle Wachtel

Don & Patty Walden

Sue & Bob Walker

Sue Weaver

Jeri Wenberg

Terry & Robin Westendorf

Leroy Wetzel

Mr. & Mrs. Merlin Wetzel

Bill & Jacque White

Lulu F. White

Marjorie P. Whitley

Russell & Louise Wiley

Harold & Nadine Wilkey

Mark & Tammy Willenborg

Patricia A. Williams

Craig & Cynthia Wise

Gilbert & Sharon Wood

Fay Woodrich

Cathy Wright

Jan & David Young

Dan & Diane Zerrusen

Adopt-A-Seat Campaign Donors

We continue to thank all of our *Adopt-A-Seat* donors! This program has helped fund the ongoing Capital Campaign. If you would like to "adopt" your own seat and be included on the special *Adopt-A-Seat* plaque in the lobby, please see the Ticket Office today or contact the Business Office at 217-728-2065.

ADM Foundation
 Anonymous
 Dale & Donna Arnold
 Mary Anne Barlow
 Marion Best—In Memory of Bob Best
 Roland & Betty Best
 Don & Margie Black
 Kelly Bland
 Alora J. Bowles / Donald W. Dodson
 Carolyn Boblitt
 Mr. & Mrs. Karl Borton
 Alora J. Bowles / Donald W. Dodson
 John & Susan Brosam
 Tom & Kathy Bunfill
 Lloyd A. Bury
 Larry & Carol Bushu
 CF & H Insurance, Sullivan & Monticello
 Jud & Sandra Cameron
 Central Illinois Physical Therapy
 Frank Clinton
 John Wm. & Mary A. Cowger
 Betty J. Davis
 Greg & Micah Dickens
 Lynn & Nancy Elder
 Ralph C. Elke
 Susan H. Elke
 Charla Bartscht Fischbach
 Richard Fischbach
 Jibby Julio Florini
 Ruth Florini
 Patricia A. Funk
 Betty L. Glasscock
 David & Dawn Grapes
 Mr. & Mrs. Donald Greffe
 Lee & Patricia Griffith
 Don & Carolyn Hackerson
 Felix & Patricia Hagerman
 Les & Ellen Hall
 Mary Ann Hargis
 Barbara Harshman
 Madelyn Harshman
 Dr. & Mrs. Jerry Hastings
 David J. Hellwig
 Margaret C. Hollowell
 Dr. Maria Horvat & Dr. James Kohlmann
 Mary Lou Hubbard & Don Dawson
 Illinois Masonic Home
 Illinois Printing Services, Inc.
 Mark & Ann Jackson
 Ross Jett
 Elaine Jett
 Larry & Marty Jones
 Mr. & Mrs. Randall Kampfe
 Dr. Philip & Peggy Kepp

Dick & Robin Kruckeberg
 Kathleen & Thomas LeVeck
 Laurence & Carla (Stokes) Leinbach
 Dr. Larry Leventhal
 Jytte Leventhal
 Donna Livingston -
 In Memory of Caitlen Fry
 Donna Livingston -
 In Memory of Clara Livingston
 Mr. & Mrs. Michael Martin
 Ed McCammack
 Melodie McCammack
 In Honor of Billy McGuigan
 Gary & Tess Melvin
 Janet Nevling
 Lorin Nevling
 Grace, Gabe & Gillian Oetting
 Jeff & Trina Oetting
 Nancy Penney -
 In Honor of Norton & Claire Penney
 Anne Pondelick
 Leo Pondelick
 Psi Iota Xi, Theta Psi Bethany
 Mary Lou Randolph
 Joy Rathe -
 In Honor of Francis & Alice Phillips
 Raymond Renner
 Sheila Renner
 Bill Rich
 Cheri Rich
 Don Robinson
 Hayley Robinson
 Tami Robinson
 Tyler Robinson
 Pauline Rowles -
 In Memory of Rev. Stewart Rowles
 Bob & Markey Saltmarsh
 In Honor of Cheryl Ann Sanders
 Art & Cheryl Sappington
 Doug Schmalz
 Peg Schmalz
 Don & Linda Schmidt
 Bonnie Scrimager
 Ralph Scrimager
 Mr. & Mrs. Ron Spears
 Mary L. Storm
 Ken & Joan Struttmann
 In Honor of Jerry & Barbara Sullivan
 Kyra Faith Swearingen
 Dr. & Mrs. Gregory L. Totel
 Tim & Julie Wilkerson
 Dennis Williams
 Jon and Lori Yelenick
 Earl & Martha Yockey
 In Memory of Marisa Yockey

The Little Theatre On The Square's 2006 Donors General Operating Fund

We wish to thank and acknowledge the following individuals, foundations and corporations who have made contributions to our general operating fund. Their generous support helps us to keep our ticket prices low, while keeping our production values at their highest levels possible. These are this year's donors as of press time. Donors to The Little Theatre's Capital Campaign are listed elsewhere in the program.

Producers (\$10,000 +)

Mervis Industries, Inc., Danville
John Ullrich Foundation -
Main Street Bank & Trust, Trustee

Stars (\$2000-\$4999)

McDonald's of Sullivan
Tate & Lyle, Decatur

Performers (\$1000-\$1999)

Ken & Deb Best, Kankakee

Patrons (\$500-\$999)

Archer Daniels Midland Foundation, Decatur
Doug & Peg Schmalz, Decatur
James O. & Sona Beavers, Taylorville

Benefactors (\$250-\$499)

Charles & Linda Adams, Mattoon
Larry & Carol Bushu, Arcola
Gery & Cheryl Conlin, Arthur
Jim & Jerry Geekie, Paris
Bob & Debi Johnston, Decatur
Larry & Marty Jones, Sullivan
Charlene Oberlin, Effingham
A.E. Staley, Jr. Foundation, Decatur
Henry M. Staley Charitable Trust, Decatur
Roger & Verna Tice, Sullivan

Advocates (\$125-\$249)

David & Ellen Bruce, Springfield

Rick & Susie Edwards, Arcola

Steve Foglia —

Chris Bracken, Decatur

Dr. & Mrs. Jerry Hastings, Mattoon

Thomas & Linda Jagger, Denver, Co.

Mary Ann & John Koucky, Decatur

Pearman Pharmacy of Paris

Dr. Henry & Esther Poterucha, Effingham

Project Extra, Mattoon

Saints (\$100-\$124)

Joan Beetle, Urbana

Doug & Sally Bock, Charleston

Mildred & Wayne Bohlen, Decatur

Shirley & Carl Bruegger, Brownstown

Rich & Sharon Buckler, Arthur

Warren E. & Jo Burgard, Urbana

Barbara & Lewis Clark, Decatur

Kay DeLong, Charleston

Richard & Mary Dawson Droste, Charleston

Margaret Foley, Decatur

Bob, Cathy & Beth Hagen, Sullivan

Barbara Hall, Urbana

C. Michael & Beth Hewing, Teutopolis

Stuart & Carole Hott, Sullivan

Mike & Ruth Keown, Sullivan

Janet McDaniel & Daughters, Newton

Bill & Jill Morgan, Mattoon

Art & Cheryl Sappington, Mt. Zion

Mr. & Mrs. Donald L. Scoles, Neoga

David & Linda Sudkamp, Neoga

Arthur & Karen Willaredt, Mattoon

2006 Donors — General Operating Fund

Angels (\$75-\$99)

Jan Sweet, Mt. Zion

Guardians (\$50-\$74)

Jim & Jean Bailey, Danville
Roger & Eileen Baker, Eureka
Bartscht-Fischbach Insurance, Shelbyville
Mark & Carol Bomball, Charleston
Bob & Pat Cannon, Camargo
Mary Beth Dedman, Sullivan
Delong Family
Robert V. & Geraldine Elder, Sullivan
Dr. & Mrs. Don Fischer, Champaign
Don & Jan Grewell, Charleston
Dr. Edward & Barbara Hoppin, Mattoon
Daniel J. & Laurie L. King, Effingham
Barbara Lichti, Champaign
Donna Livingston, Charleston
George & Marion Marquis, Mattoon
Linda & Michael H. Miller, Charleston
Tom & Marilyn Purcell, Effingham
Jerry & Marsha Robbins, Bismarck
Mark & Mary Sheehan, Mattoon -
In Memory of Joyce Randolph
Maury & Rose Mary Shepherd, Charleston
Charlene Smith, Cerro Gordo
Doncaster Patty & Lew Stiff, Mattoon
Ramona Tomshack, Charleston
Ginger Yakey, Effingham
Jan & David Young, Mattoon

Friends (\$25-\$49)

Lyetta Awalt, Effingham
Cathy Babbs, Charleston
Jack & Caroline Beaty, Decatur
George & Winona Bolinger, Shelbyville
Lelia Bonnstetter, Charleston
Rex & Marilyn Brown, Decatur
Norma Jean Carter, Windsor
Kevin & Bonnie Corley, Champaign
Macy Cornwell, Arthur
Michael & Melanie Gibala, Decatur
Mike & Linda Grose, Sullivan

Friends (continued)

In Memory of Robert K. Hantel -
Steven & Dawn Leiner, Mt. Zion
Lawrence & Carolyn Smith, Lincoln
Steve & Teri Hoelster, Neoga
Max & Louanna Jaeger, Mattoon
Hal & Mary Kottwitz, Mattoon
Virginia & Leo Perucca, Effingham
Mrs. Evelyn Preecs, Jasonville, Ind.
Raymond & Sheila Renner, Stewardson
Pauline Rowles, Sullivan
Dallas & Nancy Seitz, Moweaqua
Louis Stanke, Mattoon
Russ & Marge Stark, Charleston
John & Jo Swick, Mattoon
Harold & Nadine Wilkey, Windsor
Ken Will, Teutopolis
Gilbert & Sharon Wood, Decatur



The Little Theatre
thanks all our donors
for their support...
we couldn't do it
without you!



2006 Board of Trustees

The Little Theatre On The Square is governed by a not-for-profit corporation. The Board of Trustees of the corporation is made up of representatives from communities throughout the theatre's market area.

2006 Officers

President Gary Swearingen
 Vice President Michael Martin
 Secretary Julie King
 Treasurer Marilyn Sears

Region One Trustees

- Linda Carlton-Huber Sullivan
- Dixie Dickens Sullivan
- Evan Dickens Sullivan
- Bud Harris Sullivan
- Pam Harris Sullivan
- Lonnie Holder Sullivan
- Julie King Windsor
- Pauline Rowles Sullivan
- Judy Schrock Arthur
- Paul Schrock Arthur
- Bridget Van Hook Sullivan
- Stanley Van Hook Sullivan
- Ronald White Sullivan

Region Two Trustees

- Joel Fletcher Decatur
- Stacey Fletcher Decatur
- David Hellwig Springfield
- John Koucky Decatur
- Mary Ann Koucky Decatur
- Jay Rowley Forsyth
- Dennis Williams Springfield

Region Three Trustees

- Debbie Benefiel Paris
- Steve Benefiel Paris
- Larry Bushu Arcola
- Kevin Corley Champaign
- Ellen Hall Tuscola
- Carol Yoder Tuscola
- Jim Yoder Tuscola

Region Four Trustees

- Don Behl Shelbyville
- Judy Behl Shelbyville
- Bob Pancoast Shelbyville
- Doug Schultz Effingham

Region Five Trustees

- Christine Borreggine Charleston
- Dr. Joe Borreggine Charleston
- Mary Droste Charleston
- Anne Higley Charleston
- Robert Hills Martinsville
- Margaret Hollowell Charleston
- Michael Martin Mattoon
- Marilyn Sears Mattoon
- Lewis Stiff Mattoon
- Patty Stiff Mattoon
- Gary Swearingen Neoga

2006 Little Theatre Summer Company

M. Seth Reines, Artistic Director

Artistic Staff

Guest Directors Millie Garvey,
Patrick McCarthy, Ann Nieman
Choreographers Millie Garvey, Jamal
McDonald, Ann Nieman, Laura Schutter
Musical Director P. Jason Yarcho
Scenic Designers Kevin Bautch, Kevin
Depinet, Alex M. Gaines
Lighting Designers Diane Kinkennon,
Kevin Depinet, Joe Spratt
Costume Designers Kathryn Wagner,
John P. White
Sound Designer David Scobbie
Equity Production Stage Manager Angela
Grimaldi

Performance Company

Equity Actors Ghuon
"Max" Chung, Glory Kissel, Richard Marlatt,
Patrick McCarthy, Amy Lyn McDonald, Lee
Ann Payne, Nathaniel Shaw, Ryan Strand,
Jason Yau

Non-Union Actors Nathan Albert,
Leonard A. Anderson, Melody A. Betts, Mat-
thew Chmiel, Barbie Diewald, C.K. Edwards,
Ann Elmes, Klinton Gibbons, Rebecca Kloha,
Jeff Kready, Christopher Moyer, Drew Nel-
lessen, Elizabeth Pugh, Lindsay Ayn Ray,
Courtney Self, Sharon Slaughter, Luran Stan-
is, Michelle Valenti, Michael Walker, Melissa
Weaver, Jillian Nyhan Zygo, J. Michael Zygo

Musicians

Chris Alexander, Jon Barkhardt, Terence May-
hue, Andrew Schurman, Greg Turner, Hon-Yuan
Wang, Brian Warszona, Steven Zumbraun

Leonard A. Anderson, Executive Director

Administration and Support Staff

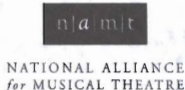
Business Manager Lori Harbaugh
Education Director Marie Jagger-Taylor
Marketing Director John Stephens
Company Manager Stacy L. Walker
Ticket Office Managers Arlene Denning,
Becky Zimmerman
Administrative Assistant Donna Newcome
Ticket Office Assistants Cassie Johnson,
Pamela Meece, Marissa Reedy, Jill
Seelhofer, Merette Trowse, Jamie Weiya
House Manager Lara Seelhofer
Assistant House Managers Cassie Johnson,
Stefanie Wolfe
Photographer R.R. Best

Production Staff

Children's Theatre Stage Manager Stacy L.
Walker
Asst. Stage Managers Evalee Buchheit,
Emily Wilson
Technical Director Kevin Bautch
Production Manager Jenn Scheller
Master Carpenter Loven M. Pratt
Carpenters Harrison F. Austin,
Brian "Traz" Sharron
Scenic Painter Alex M. Gaines
Props Master Carl L. Sage
Master Electrician Joe Spratt
Technicians Matthew Chmiel,
Mikhaila Leisbach
Sound Engineer David Scobbie
Costume Shop Foreman Jared Neil
Wardrobe Master Tyler Whitecotton
Stitcher Kristina May
Follow Spot Operators Amber Cole,
Hannah Cole, Shelby Cole &
Klinton Gibbons



**The Little Theatre
is a member of
NAMT**



The National Alliance for Musical Theatre, founded in 1985, is the only national service organization dedicated exclusively to musical theatre. Its 144 members include theatres, booking and presenting organizations, universities, and individual producers. Located throughout thirty-three states and six countries, member companies vary substantially in size, structure, and purpose, reflecting the increasing diversity of the field. Their common bond is a shared commitment to preserve and enhance this uniquely American art form.

**Actors' Equity
Association**



Actors' Equity Association (A.E.A.), founded in 1913, represents more than 45,000 actors and stage managers working in theatres across the U.S. Equity negotiates wages and working conditions, and provides benefits, including health and pension plans, for its members. Equity's mission is to advance, promote, and foster the art of live theatre as an essential component of our society. Wherever professional theatre exists, Equity exists.

A century of dedication
to you.

Celebrating 100 Years of Service

First National Bank of Sullivan congratulates
The Little Theatre on its 49th season.



*"You use a glass mirror
to see your face;
you use works of art
to see your soul."*

— George Bernard Shaw —

An Equal
Housing Lender

1 South Main 503 S. Hamilton
Sullivan, Illinois 728-4302

Member
FDIC



Illinois Printing Services
INCORPORATED

RR 2 Box 76A, Sullivan Illinois 61951
217.728.2786 FAX 217.728.2998

Illinois Printing Services, Inc. provides solutions for all your printing and graphic needs. Our staff of professionals are ready to exceed your expectations by combining their years of experience with our state of the art equipment. Stop in and take a look around our shop and you will see what makes Illinois Printing Services, Inc. stand out from the rest.

Phoenix Designs is now open in Charleston. A full service multi media design agency that can take advantage of the many talented artists in the area. Phoenix Designs will provide you with the latest, greatest design services for your communication needs.

The quality you deserve, the service you expect and the value you will appreciate.

Reach for the Stars.....



Presented by
Little Theatre On The Square

follow your dreams

Drama Classes

Classes for ages 3 to adult:

- * Creative Drama
- * Tools for the Stage
- * Improvisation/Scene Study
- * Tools for On-Camera
- * How to be a Working Actor
- * Production Performance
- * Film Production



Dance Instruction

Classes for 18 month to adult:

- * Mommy and me (18 months to 3 years)
- * Intro to Dance (3 to 5 years)
- * Kindergarten Tap

Beginning to advanced classes in:

- * Ballet/Pointe
- * Tap
- * Boyz Tap
- * Jazz
- * Funky Jazz
- * Hip-Hop
- * Lyrical Jazz
- * Musical Theatre Dance for High School
- * Adult and High School Tap



Registration for dance and drama classes will be August 18 and 19, 2006.

Classes begin:
September 6, 2006

For more information, please contact Marie Jagger-Taylor, Director of Education at The Little Theatre On The Square, 217.728.2065 or email at marie@thelittletheatre.org

Please contact John Stephens by phone at 217.728.2065 or email at john@thelittletheatre.org to schedule a booking for the Touring Production. Productions appropriate for grades K through 9.



Illinois
ARTS
council
AN AGENCY OF
THE STATE OF ILLINOIS

This program is supported by a grant from the Illinois Arts Council, a state agency, and



Consolidated
communications

Touring Productions

Professional actors come to your school with costumes, sets and props and dazzle students and teachers alike. Currently available to area schools for bookings during the 2006-2007 school year are productions of *The Cavern of Crete* and *On The Shoulders of Giants*.

MCDONALD'S PROUDLY SUPPORTS THE THEATRE FOR YOUNG AUDIENCE PRODUCTIONS

TRY OUR VARIETY OF DESSERTS

VALUE MEALS

HAPPY MEALS



11 West Jackson Street
Sullivan, Illinois 61951



The Little Theatre On The Square Remembers

Ronald Rogers

1926-2006



Ronald Rogers, who opened the first production at "Summer of Musicals" on July 3, 1957 as Tommy in *Brigadoon* went to heaven in spring of this year. He was a star in London and appeared at many large musical theatre venues all over the USA. Ron returned to Sullivan to play leads in *Wonderful Town* and *Guys and Dolls* in 1957 followed by productions of *Showboat*, *Kismet*, *Bloomer Girl*, *Late Love*, *Timid Tiger*, *Allegro*, *She Loves Me*, *Any Wednesday*, *South Pacific*, *Kiss Me, Kate*, *The Great Waltz* and *1776*. Bravo, Ronald Rogers! Your talent, your glorious voice and your fabulous personality will live on in the memories of all who were blessed to know you and be entertained by your performances at TL-TOTS.

A Tribute written by Guy S. Little Jr.

THE LITTLE THEATRE ON THE SQUARE THANKS RICOLA!

Ricola Natural Herb Cough Drops—Courtesy of Ricola USA, Inc.

Okaw Valley Orchard

craft & gift items • greeting cards
 kitchen gadgets • cook books
 apple cider • peaches • baked goods

Old Fashioned
apple
 festival
 Oct. 7&8 2006

Family Operated Business
 jennifer@okawvalleyorchard.com

1 866 APPLES 1

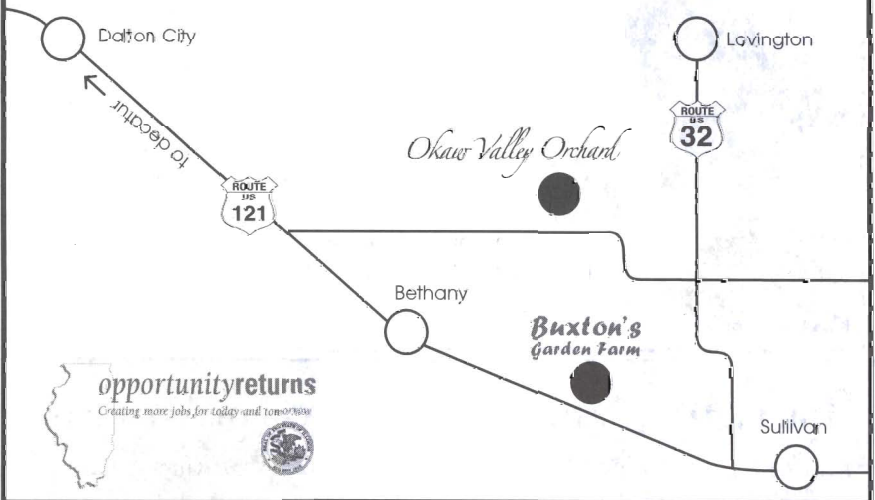
Buxton's Garden Farm

the pumpkin people

- Buxton's Butter**
- Fresh Vegetables
- Strawberries & Peaches
- Herbs
- Perennials
- Flowering Shrubs
- Annual Flowers
- Fall Pumpkins
- Gourds
- Mums

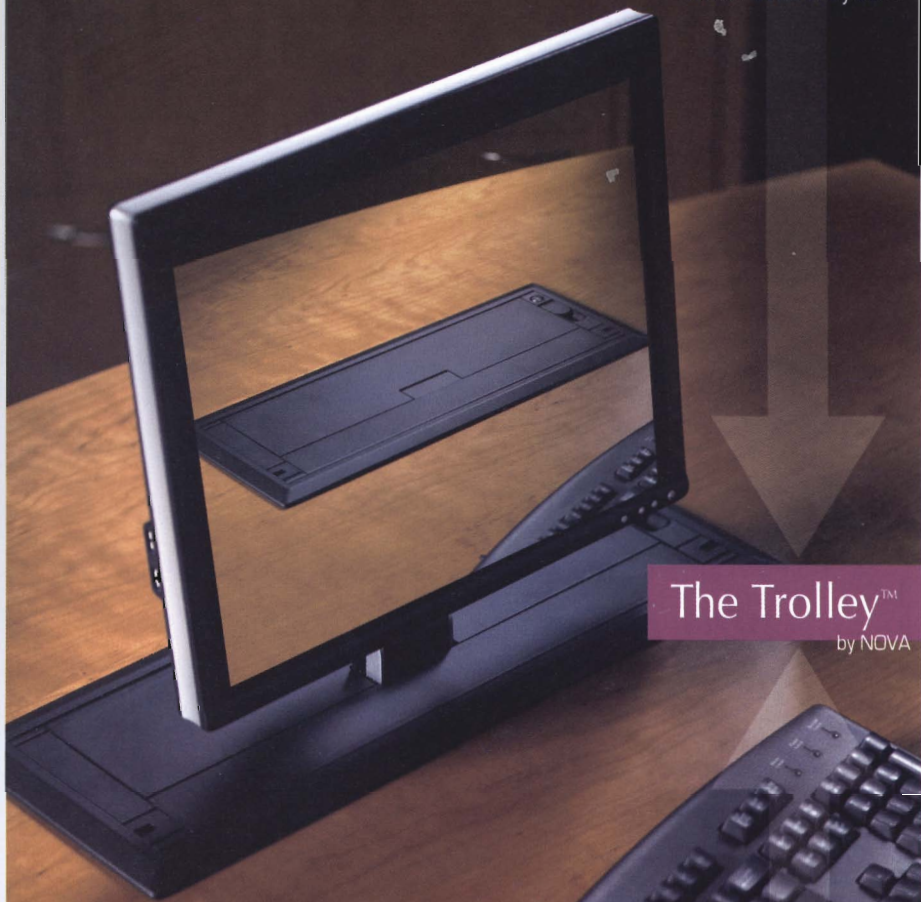
Pumpkin Chuck-n
 October 13th.

phone 217. 728. 7993
 RR3 Box 95H Sullivan, IL 61951
 www.buxtonsgardenfarm.com



The Curtain is Going Up on the
Latest Innovation for Your Flat Panel Display

www.novatrolley.com



The Trolley™
by NOVA

Proud to support The Little Theatre on the Square

DESK WITH A **VIEW**™

Crossroads Plaza, Effingham
217-342-4727



NOVA®

The Right Solutions
800-730-6682

Flexibility • Security • Privacy

© 2006, NOVA Solutions, Inc. All NOVA products are protected by one or more U.S. and foreign patents issued and/or pending.

*Our customers
get the best
seats in the
house!*



*First Mid offers all the products and
conveniences you've come to expect...
plus local service that puts
our customers at center stage.*

- **Community Banking** - choose from our full line of personal and business products including Online Banking and Bill Pay
- **Wealth Management** - plan for your financial future
- **Insurance** - secure your assets

*Stop by your local
First Mid banking center,
or visit us online at
www.firstmid.com.*



Because You Expect More.

Member FDIC
Equal Opportunity Lender