

THE LITTLE THEATRE-ON THE SQUARE•SULLIVAN, ILLINOIS•(217)728-7375•CELEBRATION 25

THE SILVER ANNIVERSARY SEASON

Rosemary Prinz

in

Chapter Two

By Neil Simon



June 11 to 27, 1982

The Little Theatre

On The Square

Sullivan, Illinois

217/728-7375

THE LITTLE THEATRE-ON THE SQUARE•SULLIVAN, ILLINOIS•(217)728-7375•CELEBRATION 25

The Little Theatre-On the Square

SULLIVAN, ILLINOIS 61951

217/728-7375

The Friends of The Little Theatre
Jean Webster, Producer
present

Rosemary Prinz in *Chapter Two*

A COMEDY IN TWO ACTS
BY

Neil Simon
with

Ron Tomme
and

Betty Ann Grove
and introducing

Bill Haens

Sets by Donny Hooper Lighting by Matt O'Donnell

Production Stage Manager—Ann Folke

Production Directed by Paul Blake

Produced by Special Arrangement with Samuel French, Inc.

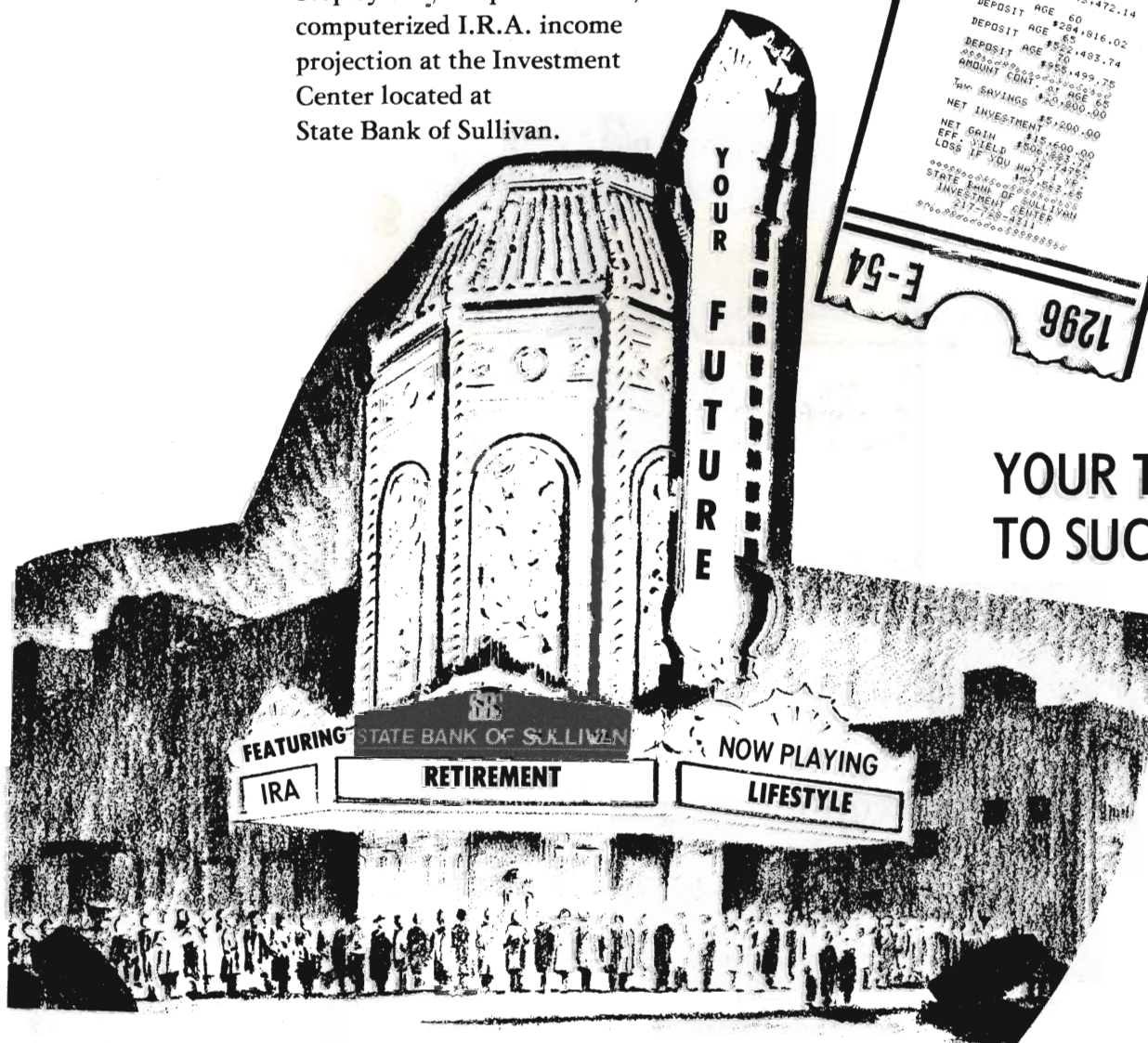
Discover The Magnificent Miles of 

Sponsored in part by a grant from the
ILLINOIS ARTS COUNCIL, a state agency

When the curtain goes up on your retirement, produce your own lifestyle.

Direct a part of your earnings into an I.R.A. at State Bank of Sullivan and Watch your talents multiply!

Stop by for your personalized, computerized I.R.A. income projection at the Investment Center located at State Bank of Sullivan.



ADMIT ONE

AGE 25
EST. % TAX BRACKET 25%
R/O AMT. \$0.00
DEPOSIT CONTRIBUTIONS \$20.00
WEEKLY DEPOSIT \$20.00
INTEREST RATE 12.000%
COMPOUNDS/YEAR 52
BASE 365

DISCLOSURE

DEPOSIT YEAR 1 \$53.12
DEPOSIT YEAR 2 \$1,176.75
DEPOSIT YEAR 3 \$1,879.87
DEPOSIT YEAR 4 \$2,672.62
DEPOSIT YEAR 5 \$3,566.43
DEPOSIT YEAR 10 \$10,064.25
DEPOSIT YEAR 20 \$43,472.14

DEPOSIT AGE 60 \$294,816.02
DEPOSIT AGE 65 \$522,483.74
DEPOSIT AGE 70 \$855,499.75
AMOUNT CONT. AT AGE 65 \$20,800.00
TAX SAVINGS \$2,800.00
NET INVESTMENT \$5,200.00
NET GAIN \$15,600.00
EFF. YIELD \$306,883.74
LOSS IF YOU WITH. 1 YR. \$69,563.65

STATE BANK OF SULLIVAN
INVESTMENT CENTER
217-728-4511

E-54
1296

YOUR TICKET TO SUCCESS

SBS

State Bank of Sullivan
Sullivan, Illinois 61951

Each depositor insured to \$100,000.

FDIC
FEDERAL DEPOSIT INSURANCE CORPORATION

JABEL

Patterns deeply carved
in 14 Kt. rose and green
gold.



See our fine selection of loose pre-
cision cut diamonds, colored stone
rings, and mountings in 14 Kt. and
18Kt. gold.

Central Illinois' Most Complete Gift Shop



J. HALL
JEWELERS & GIFTS
MOWEAQUA, ILLINOIS
(217) 768-4990

Open Daily 8:30 a.m.-5:30 p.m. . . . Friday 'til 8:30 p.m. . . . Closed Sunday

**24 HOUR SPORTS, MUSIC, RELIGION,
THEATRE AND NEWS.**

OVER 250 MOVIES A MONTH. 24 hour
sports, music, religion, theatre and news.



Mike Coil

Days-217-728-2031

Nights-217-728-8251

1312 W Harrison
Sullivan, Illinois

Call today for a bid on your
sub-division, home or business.

Warranted for 1 years parts and
labor.

- guarantee a 100° clear, sharp
studio quality picture.
- professionally installed and
maintained.
- 24 hour service and parts in
stock.

MID-STATE ANTENNA SYSTEMS



A VERY SPECIAL
PLACE

FOR VERY SPECIAL
PEOPLE"

Since 1962

Phone 235-1201
1600 Lakeland Blvd
Mattoon, Illinois 61938

McMullin-Young Funeral Homes P.C.

Serving Moultrie County

Since 1856

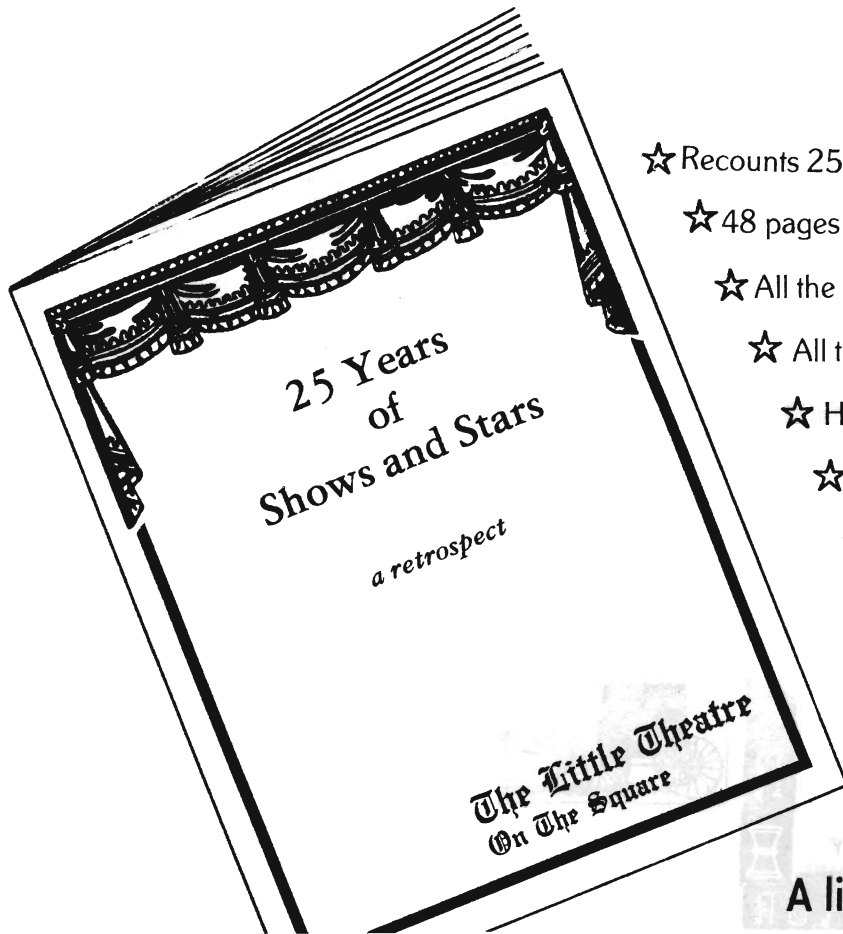
Sullivan

Bethany

Lovington



memories
25 years

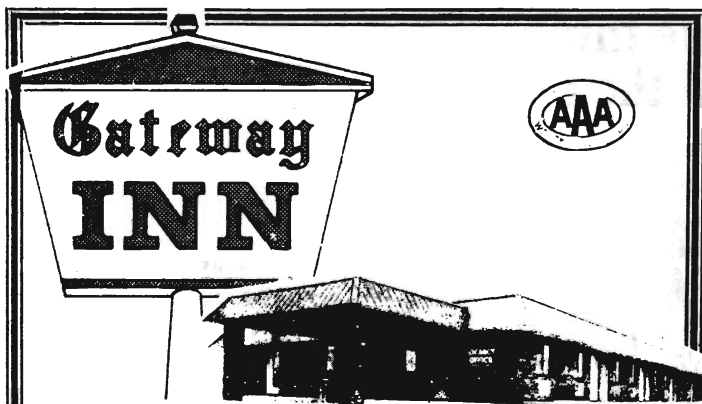


- ☆ Recounts 25 years at the Little Theatre
- ☆ 48 pages - no advertising
- ☆ All the shows
- ☆ All the stars
- ☆ History of the theatre
- ☆ Photographs
- ☆ Stories
- ☆ Personal recollections
- ☆ Apprentices who "made good"

For sale in the theatre lobby

Just \$3

A limited number of copies available



**Sullivan's
Finest
Motel**

- ✓ AIR CONDITIONED
- ✓ FULLY CARPETED
- ✓ COLOR TV
- ✓ PHONES

ROUTE 32 SOUTH
THE GATEWAY TO LAKE SHELBYVILLE

728-4314

*Courtesy car for Little Theatre stars
provided by*

**SHERMAN'S
WORLD OF CARS**

2190 East Pershing Road
Decatur, Illinois
Phone 217/877-4711


*Your new Dodge, Honda &
Volkswagen dealer*

Dodge



**"Best wishes for the 25th season at
the Little Theatre"**

from Charles E. Sherman



OUR TRADEMARK WAS DESIGNED TO IMPART OUR PHILOSOPHY AS PHARMACISTS, SERVING THE PATIENT AS A PART OF THE HEALTH CARE TEAM, WITH ONE PURPOSE – YOUR GOOD HEALTH. 24 HOUR SERVICE PHONE 728-7121

The Sullivan Pharmacy
 102 East Harrison
 Sullivan, Illinois
 Phone 728-7121

The Pharmacy
 Fields-Wright Medical Center
 2 West Adams
 Phone 728-8363

**THE FULL SERVICE PHARMACIES:
 PHARMACISTS ON CALL 24 HOURS A DAY**

GET AWAY FOR A DAY

In the heart of Illinois Amish Country

Visit beautiful Rockome Gardens, located in the heart of Illinois Amish country, and enjoy the sights and sounds of life in pioneer Illinois.

Old Bagdad Town, Rockome's recreated 19th century village, features the rustic shops of the harness maker, blacksmith, candle maker, rug weaver, bakery, grist mill, plus the machine shed, Calico Shop and the one-room school house.

Take in the beauty of the Floral Gardens, the intricate handmade rock work as well as the Amish Home, Antique Museum, Haunted Barn, Train Ride and Buggy Ride.

Enjoy some of our 'mini' celebrations this season as we feature among others the Quilt Show, Amish Markets, the Indian Pow Wow and Horse Farming Days and much, much more.

Make your visit complete by dining at the authentic Illinois Dutch family style restaurant for a meal served family style

There is something for everyone at Rockome Gardens located in the heart of Amish country - just five miles west of Arcola, Illinois.

For more information write: Rockome Gardens, Route 2, Box 87, Arcola, Illinois 61910.



ROCKOME GARDENS
In the heart of Illinois Amish Country
Route 2 • Arcola, Illinois 61910

While on Main Street in Arcola, eat a delicious meal at the Dutch Kitchen and get some Illinois Dutch cheese and sausage at the Rockome Store. Also visit the Calico Workshop in Arthur.

Some people think we're part of the act.

WAYNE JONES
Owner



Lunch
Dinner

Monday-Saturday
10 a.m.-10 p.m.

Groups
Welcome

Lounge
4 p.m.-1 a.m.

On the East Side of the Square Across from the Little Theatre *New Upstairs Lounge*

A lot of folks have made the Red Fox their "before-and-after-theatre" place.

And why not, when before the play, you can unwind with your favorite cocktail and a sizzling Top Choice Steak. Or how about a delicious Bar-B-Q Rib or Fried Chicken Dinner...

After the Show, there's nothing like the Red Fox for a nightcap with friends.

So make it a perfect evening. For a "Curtain Raiser" or a "Curtain call" it's the Red Fox. Just look across the street.

FOR RESERVATIONS: PHONE 217/728-4015
East Side of Square, Sullivan, Illinois

25th Anniversary Season

Dedicated to

Guy S. Little Jr.

Mr. and Mrs. Guy S. Little Jr.

Terili Little

Vanessa and Sean Little

who through their dreams and hard work created "Broadway in the Cornfields" and who through their continued generous advice to and support of "The Friends of the Little Theatre" have allowed us to reach the 25th Season at The Little Theatre On The Square.

June 11 - September 12, 1982
Jean Webster, Producer

Needle work of the
Little Theatre
displayed in the Lobby
is for sale at the
Theatre Box Office or at
Woolworks

50% OFF KIT COST IS DONATED TO
"The Friends of the Little Theatre"

Kit designed by Jamie Isaacs

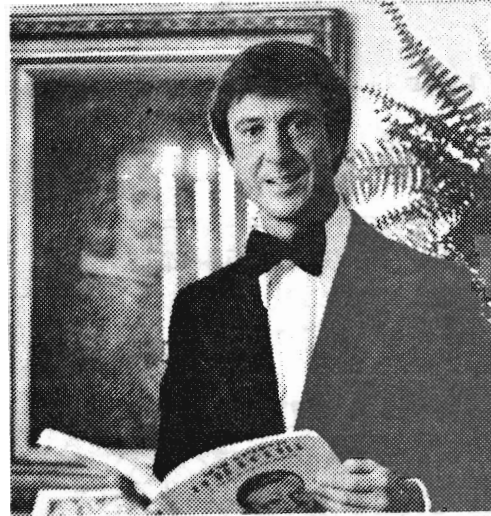
The

MILROY
MOTEL

Routes 121 and 32
Sullivan

Phone 728-7113

Air Conditioned
Television
Conveniently located near
Lake Shelbyville, The
Little Theatre-On The
Square & Sullivan
Business District



Guy S. Little, Jr. (founder of The Little Theatre On The Square) decided when he was six that he wanted to operate a live, legitimate musical theatre.

A native of Sullivan, he made his professional theatre debut in Keene, N.H. in 1951 when he was 16. After two additional seasons of summer stock near Atlantic City, he obtained his first Equity contract as a chorus singer. While at the University of Miami, he sang chorus and supporting roles with the Miami Opera Guild for three seasons. After graduation with a B.A. in theatre, he continued his studies at Columbia University and the American Theatre Wing in New York.

His dream of operating a theatre became a reality the following summer when he returned to Sullivan and leased a former film theatre, the Grand, and opened his first "Summer of Musicals" in 1957.

Since then, he has presented and directed over three hundred productions of both musicals and plays starring Alan Alda, June Allyson, Eve Arden, Bill Bixby, Joe E. Brown, Imogene Coca, Jeanne Crain, Bob Cummings, Linda Darnell, Andy Devine, Fannie Flagg, Betty Grable, Edward Everett Horton, Van Johnson, Durwood Kirby, Harvey Korman, Peter Marshall, Ray Milland, Ann Miller, Robert Morse, Pat O'Brien, Robert Reed, Cesar Romero, Margaret Truman, Dennis Weaver, Peggy Cass, Forrest Tucker, John Saxon, Mickey Rooney and Robert Conrad—to name just a few.

The Little Theatre On The Square, which Mr. Little purchased in 1961 continued operation under his direction through 1978.

While involved with his own theatre, Mr. Little also served as Producer at the famed Sombrero Playhouse in Phoenix, Arizona and the Piccolo Playhouse near Chicago.

He was Production Stage Manager at the Coconut Grove Playhouse in Miami and has presented tours of "Glad Tidings" starring Ann Sothern, "Irma La Douce" and "A Funny Thing Happened..." at theatres in Colorado, New York, Michigan, Connecticut and Ohio.

Since 1979, Mr. Little has been employed as Producer-General Manager for Milwaukee's Melody Top Theatre, a 2,150 seat star musical theatre-in-the-round which celebrates its 20th anniversary this season.

Mr. Little's favorite productions are his daughter, Vanessa and his son, Sean.

George

RUTLEDGE

Oldsmobile

Cadillac

1700 Lake Land Blvd.
Mattoon, Illinois 61938

Phone (217) 258-6461

Wolf Furniture

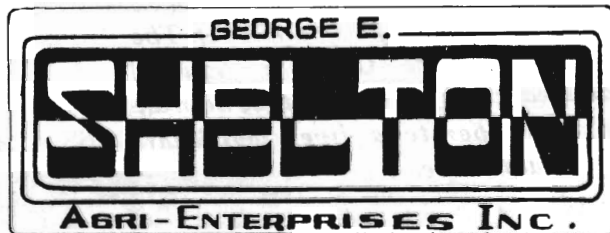
19th & Western - Mattoon

We want you to enjoy
a Sealy Posturepedic
morning.



Hi View Acres Farms

Sullivan, Illinois
KEEP THE FAITH 



Pleasant Shopping With Friendly People!
106 W. Main, Sullivan

Store Hours
Mon.-Thur. 8-8
Fri.-Sat. 8-9
Sunday 8-6

Welcome to Our Community



Metallizing Company OF AMERICA, INC.

Manufacturers of metal and ceramic flame spray equipment
and vacuum/pressure impregnation systems in Sullivan since 1968

"real friends"
of the Little Theatre

Without the support and encouragement of many businesses, organizations and individuals the 25th season at The Little Theatre - On The Square would not have become a reality.

We proudly list those who have demonstrated their interest in quality, live theatre by contributing funds and in-kind services to The Friends of The Little Theatre organization as of June 1, 1982.

super stars

First National Bank
Dr. & Mrs. Mack W. Hollowell
Wayne Jones
Jack Silver
State Bank of Sullivan
Ronald D. & Sharon A. White

featured players

Decatur Herald & Review
Furburds
Hawthorne Lodge of Sullivan

chorus

Corley International, Inc.
Richard and Connie Dunscomb
Ollie & Nancy Elder
Jibby Florini
Robert A. & Janice C. Lemler


extra

Evening Woman's Club
Cleo Hall
Harshman Plumbing, Heating & Electrical Co.
Linda Madama
S & R Liquor Company of Decatur
The Sullivan Printers
Frank Thompson, Jr.
Ruth P. Thompson

group discounts available

HAGEN'S
Family Pharmacy 
8 E. Harrison, Sullivan, Ill.

On The North Side of The Square
728-7388
Prescriptions Gifts
Cosmetics Hallmark Cards

Elzy's  *Flowers & Gifts*
John M. Brosam
Jill D. Brosam
OWNERS
Let us make your life a little more beautiful

412 S. Hamilton Sullivan Phone 728-7358

DON'T




AROUND

Come to Kaskia First!

Kaskia Hardware
Sullivan, Illinois
728-7551

An old fashioned hardware store for those hard to find items



THE WOOL WORKS 
112 E. Jefferson St.
Sullivan, Ill.
Phone 728-2024

20% OFF

This coupon & your Little Theatre ticket stub are good for 20% off your first purchases of cross stitch, needlepoint, crewel, latch hook and/or accessories.

coupon

FIRST NATIONAL BANK

OF SULLIVAN, ILLINOIS

1st



the cast

(In Order of Appearance)

George Schneider
Leo Schneider
Jennie Malone
Jaye Medwick

Ron Tomme
Bill Haens
Rosemary Prinz
Betty Ann Grove

synopsis

The Scene

The action of "Chapter Two" takes place in Jennifer Malone's upper East Side apartment and George Schneider's lower Central Park West apartment. The play begins on a late February afternoon and continues through to midspring.

the staff

Administration

Producer Jean Webster
 Associate Producer Robert Gwaltney
 Asst. to Producers/Asst. Box Off. Mgr. Steve Marquette
 Public Relations/Promotions Intern. Lynn TeStrake
 Advertising Pat Mauk
 Special Projects Michael Wilson
 Legal Counsel Robert V. Elder
 Staff Photographer J. William Hoban III
 Accounting services Brumleve & Dabbs

Production

Technical Director/Set Design Donny Hooper
 Asst. Tech. Dir./Light Designer Matt O'Donnell
 Stage Manager Ann Folke
 Asst. Stage Manager Tom Marks
 Apprentice Coordinator Lori Ganders
 House Manager Steve Jones

Interns & Apprentices

Scott H. Blomeley, Karen Campbell, Dianah Dulany,
 Cathrine Farley, Renee Goethe, Kurt Hoogstart,
 Gretchen Kehde, Gail Klein, Steven Jones,
 Jeff Malone, Deanna Majewski, Robert May,
 Andy Monroe, Eric Nord, Cheryl Schoonover,
 Kathryn Shepard, Gary Vandeventer, Debbie Wilcox,
 Wendy Wirt

Box Office assistant Cheryl Schoonover, Catherine Farley

Volunteers

Volunteer Coordinator Rosie Myers
 Gala Committee Margaret Hollowell
 Hospitality Committee Cindy Haegen, Glenda Corley
 Production Committee Patsy Jones, Pauline Rowles

apprentice assignments for Chapter Two

Costumes Dianah Dulany
 Deanna Majewski
 Sound John Belche
 Props Gretchen Kehde, Karen
 Campbell, Jeff Malone
 Lights Robert May, Debbie Wilcox

Volunteers

Kay Aldridge
 Lynda Bernius
 Ann Burke
 Audrey Calvert
 Sloan Calvert
 Carol Castel
 Shelly Clagg
 Glenda Corley
 Beechie Davis
 Marty Edwards
 Dee Elder
 Frances Elder
 Sandra Elder
 Margaret Ellerbrook
 Jim Ellerbrook
 Jim Ennis
 Mary Erdmann
 Mary Farner
 Carol Gambrell
 Cheryl Gillis

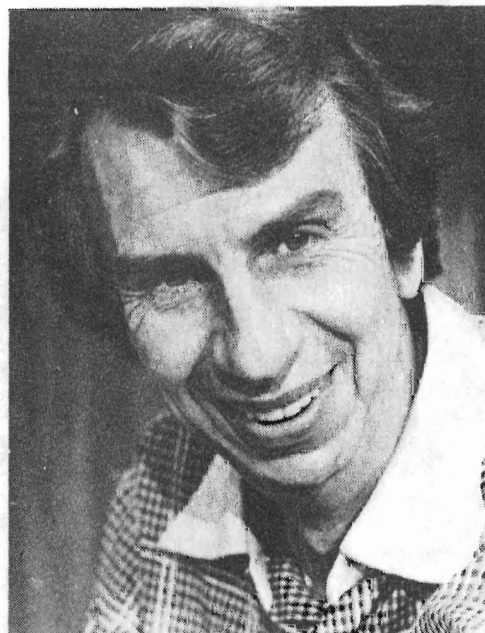
Brad Goodrich
 Gerald Gordy
 Karen Gordy
 Cindy Haegen
 Cleo Hall
 Harold Hamilton
 Ann Hamilton
 Scott Johnston
 Debbie Johnston
 Helen Kenney
 Linda Keown
 Mary Kranz
 Bob Lamendola
 Linnea Lamendola
 Denise Land
 Diane Lucas
 Jan Lemler
 Joyce Lowder
 Steve Mauk
 Carolyn McFarland

Kirk McNamer
 Lisa Muirheid
 Marsha Nolen
 Thelma Preston
 Lota Priddy
 Kathy Reed
 Lisa Rowles
 Margaret Royer
 Marilyn Schmidt
 Linda Shasteen
 Beth Shervey
 Donna Simpson
 Alan Stivers
 Mary Storm
 Evelyn Taylor
 Tony Tepatti
 Roberto Tepatti
 Jenny Waelde
 Susie Weir
 Leta Young

Ushers

Head Usher,
 Mika Schoonover
 Asst. Head Usher
 Lisa Muirhead
 Asst. Head Usher
 Tammy Florini
 Shelly Clagg
 Paula Dobbs
 Melissa Dolan
 Lisa Farley
 Brad Goodrich
 Angela Gore
 Tracy Harchous
 Jennifer Hargis
 Tammy Linville
 Julie Schaljo
 Beth Shervey
 Cheryl Sims
 Jenny Waelde

"The arts are not a casual adornment to an affluent society, but truly basic to the civilizational need and aspirations of a great society."
 -Isaac Stern



Robert Gwaltney

ROBERT GWALTNEY (Associate Producer) returns to Sullivan after an eight-year absence as Associate Producer with Jean Webster for the 1982 season. Mr. Gwaltney made his professional debut at the age of 19 with Burgess Meredith in "The Silver Whistle" in New York and continued to work professionally through his college years.

He was in the first production of The Little Theatre in 1957 and served as assistant to Guy Little Jr. during that first season the theatre was in operation. Well known to Sullivan audiences, he has appeared in over 100 productions at the theatre playing supporting roles with many of the nation's top stars. He has worked extensively in theatres in the East, and in New York, appeared off-Broadway and on TV in "The American Heritage" and "United States Steel Hour" series.

Among many favorite roles in Sullivan he includes, Milo in "Lo and Behold" with

Marie Wilson, Lutz in "The Student Prince" with Peter Palmer, Big Jule in "Guys and Dolls" with Alan Alda, Henri Trøchard in "My Three Angels" with Andy Devine.

"It is a strange, wonderful and exciting experience to be a part of The Silver Season . . . something I would never had imagined in my wildest dreams. There are so many memories . . . so much joy and so much 'blood, sweat and tears' on the part of so many people who are a part of all of this whether they are here or not. I am delighted and deeply grateful."

MATTHEW O'DONNELL (Asst. Tech. Director/ Light Designer) Matthew comes to the Little Theatre from Seattle, Washington where he is currently working towards his Master of Fine Arts degree in Lighting Design & Technical Direction at the University of Washington.

While there he has designed lighting for productions of "The New York Idea", Michel Tremblay's "Bonjour Ca Bonjour," and served as Technical Director for last winter's production of "Romeo & Juliet," this springs "The Virgin, The Whore and The Desperate Ones."

Before going to the U. of W., Matthew received his B.A. degree in Drama from San Jose State University in California where he designed lighting for a number of productions including "Pippin" and "R.V.R."

During the summers Matthew has traveled around; working at such places as the Colorado Opera Festival in Colorado Springs and the PCPA/SOLVANG Theatrefest in Santa Maria, California.

After this summer, Matthew will return to Seattle to continue his studies in Lighting Design and Technical Direction.

DONNY HOOPER (Technical Director/Set Design) Donny began his formal study of theatre at East Texas State University in 1976. While at ETSU he worked on over thirty productions including sets, lights, sound and acting.

While working for major oil corporations, Donny toured the country from Michigan to Oregon during the summers of '76, '77 and '78. After completing a B.S. degree at ETSU, he chose to continue his education at Southern Illinois University at Carbondale.

While at SIU-C Donny served as Assistant Technical Director for all major productions, designed several sets, including "Death of a Salesman," "The Mikado," "Five Finger Exercise" and "The Maids."

During SIU-C Theatre Summer Playhouse '81, he served as Technical Director.

Upon completion of a Masters in Fine Arts degree, Donny was asked to come to Sullivan to design scenery and oversee its construction.

Future plans take Donny back to Texas to teach design and stagecraft at Lon Morris College in Jacksonville.

Ann Folke (Resident State Manager) Ann Folke made her professional debut in Sullivan as Bloody Mary in "South Pacific." She also played Melba in "Pal Joe," Sara in "Paint Your Wagon" and Madame Lliang in "Flower Drum Song." Since then, she has worked as actress, stage manager, designer and technician in theatres in the midwest and in New York. She assisted lighting designer Jules Fisher on the Broadway productions of "High Spirits" and "Anyone Can Whistle." Most recently, she played Mrs. Alving in "Ghosts" and Miss Madrigal in "The Chalk Garden" at the Meat and Potatoes Theatre in New York and stage managed three new plays for Gene Frankel. She is an Associate Editor of "Simon's Directory of Theatrical Materials, Services and Information" and of "Theatre Design and Technology."

TOM MARKS (Assistant State Manager) returns to The Little Theatre On The Square and the pleasant pace and people of Sullivan after a busy year. Upon closing in "Grease" last season he has been on a ten city National tour as Charlie in "You're A Good Man, Charlie Brown" which traveled from Boston to San Francisco. Tom was featured in three episodes of the NBC series "Chicago Story" and made several commercials for Sears and Eagle Foods.

Tom has worked with such stars as Van Johnson Mercedes McCambridge, Ray Walston, Barry Williams and Rue McClanahan and Han Conried from last season.

In recent years Tom has appeared as Robert in "Company" with the Madison Civic Repertory Co. in Wisconsin, as Steven Kodaly in "She Loves Me" with SCT Productions in Chicago and reprised Kenickie in "Grease" at Melody Top in Milwaukee. When not on stage or on camera Tom is involved in production and technical aspects of several theatre groups in Chicago.

Tom is very grateful for being asked to return to Little Theatre in its 25th season and to have again the chance to work with it's great staff and management.

special thanks

Elzy's Florist for our opening night floral displays.

The staff of Best Newspapers.

Bill Hoban - photographer

Our many volunteers

The Little Theater Stars travel with Franklin Travel

Let Franklin Travel make You a STAR!

STAR stands for Special Travel Account Record

STAR service gives you-

- ★ Personalized Record Kept On File
 - ★ Fast, Accurate Reservations & Tickets
 - ★ Special Handling You Desire
 - ★ Mail Out Tickets Same Day You Call With Credit Card Purchase- No Need To Come In
- Call for your STAR Application- it's free!

- 15 TRAVEL CONSULTANTS TO SERVE YOU
- 8 SABRE COMPUTER TERMINALS
- NO CHARGE FOR OUR SUPER SERVICE



Franklin Travel

429-2525 • 1-800-252-1583

304 South Franklin

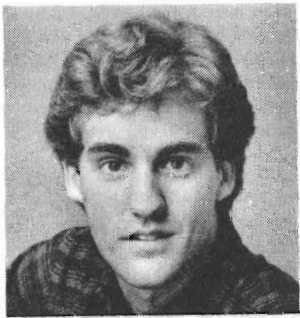
Franklin Mall - Decatur, IL.



Travel Service

Representative

June 29 - July 18*



JOHN WESLEY SHIPP

(Kelly on *The Guiding Light*)
June 29 - July 11

as
Curly
in

Oklahoma!

By

Rogers & Hammerstein

**You Can Still Buy 1982
Season Tickets.**

Bring your "Chapter Two" ticket stub
to the Box Office and the cost will be
credited toward your season
ticket purchase.

Offer good through June 28, 1982

group discounts available

CHILDREN'S THEATRE



July 10 and July 17

Rumplestiltskin
by W. T.

July 31 and August 7

Cinderella
by C. Chorpensing

*MICHAEL SCOTT, direct from Broadway's
hit musical *Pirates of Penzance* and Danny
Zuko in the Little Theatre's
Grease in 1981 will play
Curly July 13 - 18

SHOW TIMES 11 a.m. and 2 p.m.
All tickets \$2.50

Phone 728-7375



SULLIVAN

**I.G.A.
FOODLINER**

Bakery
Delicatessen

431 South Hamilton
Sullivan, Illinois



KAISER
AGRICULTURAL
CHEMICALS

ONE person can make a difference you

I CAN

Spencer Firearms, Inc.



5 South Main Street

(on the square)

Sullivan, Il., 61951 Phone 728-7128

**Offering the finest in
quality antique arms
and
scrimshaw on ivory**

Full Service & Repair

KEN & BEV'S KERR-McGEE SERVICE STATION

Ken & Bev Puleo
305 S. Hamilton Street
Sullivan, Illinois 61951
Phone 728-9049



MOSCHENROSE JEWELERS

Jewelry Design
Diamond Setting
Fine Jewelry and Watch Repair

ON THE SQUARE
SULLIVAN, ILLINOIS
PHONE 217/728-8551
JOE MOSCHENROSE
Mike Moschenrose

Welcome to Sullivan and
The Little Theatre

Shop for Men's & Boys'
Clothing at

Hamilton's Menswear

Southeast corner of the square
"Nationally known brands"

Enjoy our new store in Sullivan

DINING AFTER THE SHOW?

Call us before 10 p.m. and
we'll stay open 'til midnight — just for you



The Little Steakhouse in Dalton City

Stoney's

Phone 217/874-2213

12 miles west on U.S. 121
Downtown Dalton City

Mon.-Thur. 5 p.m.-10 p.m.
Fri. & Sat. 5 p.m.-11 p.m.
Sun. 11:30 a.m.-8 p.m.

Sullivan Savings and Loan

Presents "A Financial Dilemma"

Act I

Scene 1: "Where can I get most for my money with absolute safety?" ...Cee Dee and HI Rates

Scene 2: 111 SOUTH HAMILTON, SULLIVAN
"The answer is Sullivan Savings and Loan." ...Beats D. Banks

Director Ruth Massey
All of our \$100,000,000 welcomes you.
Fully Insured

TOTAL HARDWARE **Coast to Coast**

Frank & Maxine Cardinale
Owners

Customer satisfaction is our goal

435 South Hamilton
Lakelander Plaza
Sullivan, Illinois 61951
(217-4100)

Open 7 days
a week

Stubblefield, Inc.

1320 West Jackson
Sullivan, Illinois

BUICK



GMC
TRUCKS

"Serving those who enjoy good food"

Knowles Cafeteria

1626 Broadway
Mattoon, Illinois

Phone: 234-4577

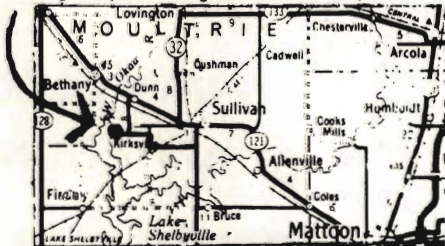
Specialists in Machining, Fabrication,
Assembly and Engineering Services

AGRI-FAB, INC.

303 West Raymond
Sullivan, Illinois

THE DEPOT ANTIQUES & GIFTS

gallery featuring limited edition prints



West On Eden Street Road P. O. Box 137
SULLIVAN, ILLINOIS 61951 1-797-6445

O.K. Jobbers

Auto & Implement Supplies

404 West Roane Street

Phone 728-7378

Sullivan, Illinois

Lynn E. & Louise Huntsburger
owners

Sullivan Packing Company

1 1/2 MILES SOUTH OF SULLIVAN ON RT. 32
R.R. 3 - BOX 946
SULLIVAN, ILLINOIS 61951

Custom Butchering &
Seafood Distributors

728-8388



message

from the Board of Directors

I would like to welcome you to the 2nd season of The Little Theatre under the Board of Directors of the Friends. Theatre has always been an important part of the cultural activity of the Sullivan area and without you, the audience it could not continue. The Board, our producer and I pledge ourselves to continued quality productions and we welcome your support and comments concerning all our activities. Bring your friends back and enjoy, as I do the excitement, music and laughter of Live Theatre.

Ron White, President

Backed in 1957 when the curtains parted at the Grand Theatre on a spirited production of "Brigadoon," many unknowingly assumed this was the advent of legitimate theatre in Sullivan. But not so! Eighty-six years earlier Sullivan audiences had gasped in horror as the wicked Simon Legree urged his bloodhounds onward in hot pursuit of poor Uncle Tim, Little Eva and Topsy.

The whole thrilling episode unfolded in the gaslit, plush red and gold atmosphere of the Titus Opera House. It was located on the corner only half block away from the site of The Little Theatre today.

Here, famous divas, actors and comics of another era had their hour upon the stage. It was also here that Winifred Titus Sentel, who was later to sing in many of the famous opera houses of Europe made her debut as Little Eva.

One of the first theatres in Sullivan and known as the finest in Central Illinois, The Titus was constructed in 1871 at a cost of \$30,000.

Seating 800, it provided entertainment and a center of recreation and community activity for almost forty years when, on February 20, 1910, a tragic fire consumed its glory leaving behind only a pile of ashes and rubble. For a few years following, legitimate theatre activity was silenced in Sullivan.

A nickelodeon held forth a few blocks from where the Titus had stood and did a fairly prosperous business during the interim. In 1915, the Jefferson Theatre was constructed.

It housed touring companies, concert artists, and many of the fine performers of the day as well as that new fad coming in from the West—the motion pictures. In 1924, the Jefferson, too, met its end in flames. For a while a new nickelodeon entertained the populace, but the movies had gained in scope and were taking the country by storm.

So, in 1928, Sullivan had its first movie theatre . . . The Grand. During the war and post-war years this movie theatre flourished, and it was not uncommon to wait in long lines to see the latest film and product.

Then, in the summer of 1957, a young man realized a lifelong dream. Guy S. Little, Jr. leased the Grand, hired a company of players and technicians, and the curtains parted again in Sullivan.

Since that date, The Grand has become the Little Theatre and here, on this stage, have appeared some of the finest stars and most outstanding musical comedy works of the current American theatre.

In 1979, Guy assumed the position of Producer for the famed Melody Top Theatre in Milwaukee, Wisconsin. Gerald and Barbara Sullivan formed a company and produced six productions during the '79 season at the Little Theatre, but in 1980 theatre activity was stilled in Sullivan.

For one year the glittering lights of the marquee were dark. Then, in 1981, a group of Sullivan concerned citizens met to decide what could be done. From that meeting evolved The Friends Of The Little Theatre.

A Board of Directors was formed, generous contributions made, and the Theatre was now in the hands of the community.

Producers Jean Webster and Norbert Krausz were bired for the 1981 season. Under their supervision the curtain rose on six productions bringing the talent and glamour of New York and Hollywood back to Sullivan.

Encouraged by the response of the community and theatre-goers throughout the mid-West, The Friends, a non-profit organization, made plans for a 1982 season with Ms. Webster as Producer. So, here we are tonight, and proudly we take this space to salute our heritage.

Robert Gwaltney

WE'RE THE NEIGHBORHOOD PROFESSIONALS.™

Each office is independently owned and operated.

Your home is the most important investment of your life. When it comes to selling it, why put it anywhere but the top? Trust your precious investment to a member of the Number 1 team.

When you're listing your home, let us help you with our expertise, including ways to cope with today's economy. Pick up the brochure, "Alternative Financing: How to Buy and Sell Real Estate in the 1980's".



HARGIS REAL ESTATE
104 E. Harrison St.
Sullivan, Illinois 61951
(217) 728-8111



CORLEY INTERNATIONAL, INC.



**For the Finest
Sales and Service
in International
Farm Equipment**

**State Routes 121 and 32
Sullivan, Illinois**

Sullivan Package Liquor

All Popular Liquors
Beer & Wine
Kegs & Party Supplies

Drive-Up Window



619 South Hamilton
Sullivan
Phone 728-4711
George Selby, Owner



720 W. Jackson
Sullivan, Illinois

TABOR GRAIN CO.

417 E. WATER ST. SULLIVAN, ILLINOIS

Have a Nice Evening!

**Dunscomb's
Furniture**

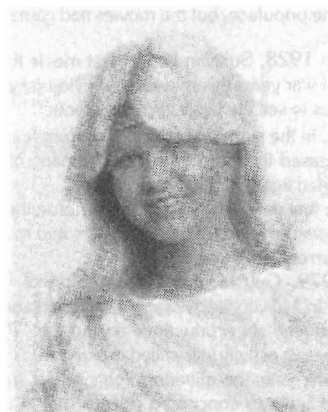
Located on the Square
Sullivan, Illinois 61951
Phone 728-4533

Serving the theatre area
for three generations

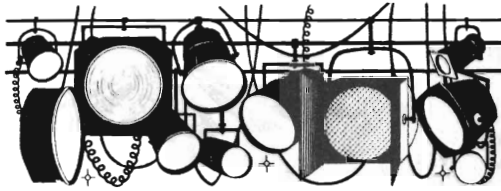


**...WE CAN BE AS CREATIVE
AS YOU CAN BE...**

...And at The Tintype your ideas are as important as ours. Whether it is a studio portrait or an environmental portrait, we offer portraits that are YOU. When you're in Arthur, stop by and see examples of our work or call 543-2233 for an appointment.



THE TINTYPE, 139 S. Vine in Arthur, Illinois



Support our advertisers!

<p>KINGERY PRINTING COMPANY "For all your printing needs." 813 N. 3rd St. P. O. Box 1203 Effingham, Illinois 62401 Phone (217) 347-5151</p>	<p>FAT Albert's Prime Rib Steaks Seafood Mattoon, Illinois Cross County Mall</p>	
<p>WOOD INSURANCE AGENCY, INC. 7 WEST HARRISON STREET SULLIVAN, ILLINOIS 61951 PHONE: 217-728-7361 Since 1929</p> <p> </p>	<p>Fashion Shop South Side of Square Ladies and Childrens Clothes Famous Name Brands</p>	<p>Salonique 301 W NORTH STREET • DECATUR, IL 62522 PHONE 217-422-1558</p>
<p>The Dress House 801 South Hamilton Sullivan, Illinois Everything you need to look your best</p>	<p> Shasteen Motors, Inc. 14 North Main Sullivan, Illinois Phone 728-7384 Third Generation of Ford Dealers</p>	<p> KENNEY INSURANCE AGENCY 110 N. Madison St. Sullivan, Ill. Phone 217/7284528 Marvin E. "Toad" Kenney Helen P. Kenney Owners</p>
<p>P. N. Hirsch & Co. 113 E. Jefferson Sullivan, Illinois CLOTHES FOR THE FAMILY OPEN SUNDAY 1-5 P.M.</p>	<p>Family Shoe Center West Side of the Square Sullivan — Ph. 728-7732 Red Wings — Jarman — Hush Puppy Stepmaster — Charm Step</p>	<p>HAIR DESIGNS Colleen Pleasing the Stars and You 15 West Harrison Phone 728-7911</p>
<p> Ward Furniture Rt 121 West Sullivan, Illinois 217-728-4383 CARPET IN STOCK \$5.99 & Up</p>	<p><i>Our Best Wishes to The Little Theatre</i> Dean's Sullivan Greenhouses Phone (217) 728-4321 John and Ruth Dean</p>	<p>Harshman Plumbing, Heating & Electrical 1205 South Hamilton Sullivan, Ill. - Phone 217/728-7391 RESIDENTIAL — COMMERCIAL — INDUSTRIAL CONTRACTOR</p>

the mainstays

Again this year at The Little Theatre — On The Square is a category of Theatre supporters known as **V.I.P. Season Ticketholders**. Our V.I.P.'s have made a contribution to the Friends of The Little Theatre and are therefore seated in a preferred seating section and are welcomed to special theatre functions. V.I.P.'s as of June 1st printing date are:

Dr. & Jose M. Arcila
 Richard & Marjorie Armstrong
 Robert Arrol, R. Ph.
 Sylvia Barry
 Elizabeth G. Blaisdell
 Russel P. Bolerjack
 Mr. & Mrs. W. Scott Blomeley
 Richard Busby
 Warren Day
 Mr. & Mrs. Bob Elder
 Mrs. Oliver (Nancy) Elder
 Mary Erdmann
 Jim & Margaret Ellerbrook
 Ralph Emel
 Jibby Florini
 J. H. & Louise Gerken
 Robert L. Greenwalt
 Charles Gillgrass
 Mr. & Mrs. Bob Harris

Ernest R. Hein
 Caroline Heinrichs
 Mrs. Gale Jones
 Mrs. Henry Jones
 Dorothy K. Joseph
 Glen Mann
 Merle Martin
 Jan Mitri
 Alva H. Montgomery
 Bob & Rosie Myers
 Kenneth D. Otta
 Mamie Palmer
 Dorothy Pennell
 Wayne Schile
 George Selby
 Jan Sweet
 R. P. Thompson
 Terry Warren
 Delbert & Alyne White

group discounts available

Harlan's

Men's and Women's Fashions



101 E. PRAIRIE
DECATUR, ILLINOIS

The INDEX

The Friendly
Family Store

The LANTERN Shop
Exciting Gifts
Cards & Candles



Open Friday nights 'til 8 p.m.
Always FREE parking in Sullivan

SOUTH SIDE OF THE SQUARE IN SULLIVAN



MELODY TOP THEATRE
7201 WEST GOOD HOPE ROAD
MILWAUKEE, WISCONSIN 53223

Guy S. Little, Jr.
Presents
The 20th Season

June 1-13
JOHNNY DESMOND
SUE ANE LANGDON
STUBBY KAYE
"GUYS AND DOLLS"

July 13-25
TOM POSTON
"FIDDLER ON THE ROOF"

August 10-22
JOHN RIATT
"FANNY"

June 29-July 11
ANDREA McARDLE
"MEET ME IN ST. LOUIS"

July 27-August 8
DOUG SHEEHAN
"THE PIRATES OF PENZANCE"

June 15-27
BARRY WILLIAMS
"WEST SIDE STORY"

August 24-September 5
JOANNE WORLEY
"ANNIE GET YOUR GUN"

Reservations and And Information
414/353-7700

STATE BANK OF ARTHUR

Arthur Illinois

A GREAT COUNTRY BANK IN A GREAT COUNTRY





*Garrett States and Jean Webster holding 1982
company auditions.*

It has been my privilege to know and work with many of the talented and dedicated actors, musicians, directors, designers, technicians, administrators, volunteers and apprentices who have made it possible to reach that "one shining moment the stage seems illumined" and our 25th season.

I love them all and thank them for the inestimable joy their dedication has brought to this theatre and to me.

Under This Lens

The theatre is empty, the stage bare
And dim, at a folding table
An actor puzzles over his part;
Soon he moves among the metal chairs
On chalk marks, now sitting on a dusty settee,
Now leaning against the flats for mantelpiece.
Choosing from a pocketfull of clues
He begins to weave these unlike skeins,
Forming a character with a new walk,
A new voice, and new perceptions
Until, with frayed edges trimmed straight,
He can slide each strand through
The writer's truthful eye.

For one shining moment the stage seems illumined
And, under this lens, minds and hearts converge.

Jean Ducey

JEAN WEBSTER

Southern Illinois Complete Family Entertainment Center



Junction I-70-57 Rte 32-33
Effingham, Illinois 62401

- K-Bowl
- Game Room
- Pool Tables
- Minature Golf in Season

Award winning restaurant "Thelma's"
Gracious service for a light snack
or for casual dining-6 a.m. til 10 p.m.
Sunday brunch- very special-8 a.m. til 1 p.m.

Refinery Lounge-unusual decor and menu
11 a.m. til 10 p.m.

Ramada Lounge open til 12 p.m.
Great bands at Patio Dances every Saturday
night thru Labor Day

The Ramada Inn-4-Star Mobil Award

Before or after the Theatre
We are happy to serve you

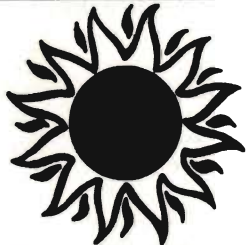
Jibby Cordially Invites You To His Gallery Of Stars



Jibby's

One Block North of Square
217-728-9031

Prime Steaks You Will Remember
Pizza From Jibby's Special Recipe
Shrimp Chicken Sandwiches
•GROUPS INVITED•



HARRIET PERRY TRAVEL, Inc.

— FREE TRAVEL PLANNING —



COMPLETE TRAVEL ARRANGEMENTS BY EXPERIENCED CONSULTANTS

"Now at no additional cost to you ... \$50,000 Automatic Flight Insurance underwritten by Mutual of Omaha ... when you purchase your airline tickets from us."

OPEN DAILY 8:30 AM - 5:30 PM - SATURDAY 9:00 AM - 12:00 NOON

239 SOUTH MAIN
Decatur, Illinois

429-2454

BARBARA DEEMER - MARGARET FASSNACHT
RITA GORDEN - AMY LIVERGOOD
HARRIET PERRY - FLORENCE RUPP.
KAY PENN - LINDA CONNER

**Drawing
Two tickets to see**

"Love Boat's"
Captain Steubing
Gavin McLeod
in
"Mass Appeal"
at
The Little Theatre
on the Square
Sullivan, Il 61951

Bring coupon to:
Harriet Perry Travel, Inc.
239 S. Main
Decatur, Il

Name _____
Address _____
City _____
State _____
Zip _____
Phone _____

Tickets will be mailed to winner.

ROSEMARY PRINZ, (Jennie Malone) who became a national byword in American homes as a result of her creating the character of 'Penny' in CBS' indefatigable serial "As The World Turns," is first and foremost an actress of the stage. Ms. Prinz was raised in an artistic background, as her father was the well-known cellist, Milton Prinz, a member of the NBC Symphony Orchestra under the baton of Arturo Toscanini, the founder of the New York String Quartet. In this atmosphere, it seemed quite natural that at the tender age of 16 she should make her debut at the Gragsmoor Summer Theatre, directed by Morton da Costa.

The next few years were spent mostly in bus and truck tours of such plays as "Joan of Lorraine," "Kiss and Tell," "Glad Tidings," "The Second Man" and others. Broadway followed in "Late Love" with Arlene Francis, "Tonight in Samarkand" with Louis Jourdan, and "The Grey-Eyed People" with Walter Matthau. During her long tenure as 'Penny,' which ended in 1968, Ms. Prinz made it an important part of her contract to be released consistently to go back to her first love, the theatre. She starred all over the country in such diverse plays as "Twigs," "Cat On A Hot Tin Roof," "Two For The Seesaw," "The Owl and The Pussycat," "Mary, Mary," "Forty Carats," and "Peterpat." Her musical roles include "Mame," "Applause," "Annie Get Your Gun," "The Apple Tree," "Irma La Douce," "I Do, I Do," "Paint Your Wagon," "Kiss Me, Kate," "The Unsinkable Molly Brown," and Mama Rose in "Gypsy."

Ms. Prinz has starred on Broadway in George Abbott's revival of "Three Men On A Horse," at which time she also starred in "All My Children" on ABC. She also starred in the national company of "Last of the Red Hot Lovers." She co-starred in "The Prisoner of Second Avenue" with Art Carney in the Chicago company, and then went on to play it on Broadway with Gabe Dellaville doing a 9-month run as the star in NBC TV's "How To Survive A Marriage."

During the past several seasons Rosemary keeps proving her versatility by appearing in such diverse roles as "Desiree" in "A Little Night Music" (for Studio Arena in Buffalo), "Marion" in "Absurd Person Singular," "Millie" in the First National Company of "California Suite," "Doris" in Eugene O'Neill's "Long Days Journey Into Night."

She appeared on Broadway opposite Jack Lemmon in "Tribute" and later accompanied him to California to repeat her role in the west coast production. While there, she guest-starred on TV in "Hart To Hart", "Laverne

and Shirley," "Archie Bunker's Place" and "Knot's Landing." Now back in New York, she has joined the prestigious Circle Repertory Company and has just appeared as Mickey Rooney's daughter in the new NBC situation comedy, "One of the Boys."

RON TOMME (George Schneider), who delighted Little Theatre audiences last year playing opposite Kathryn Hays in "Same Time Next Year" returns to Sullivan for his second appearance.

Holding one of the longest records as a soap opera performer, Tomme is best known for his role as Bruce Sterling on CBS' "Love of Life." He first appeared in the role in 1959 thinking it would only be a three or four day part. However, audience response was so immediate and enthusiastic that he remained until the show closed in 1980.

Tomme has also appeared on and off Broadway in "The Time of Your Life," "Playboy of the Western World" and "The Autumn Garden." He has also been in national theatre tours of "Time Out for Ginger," "Plaza Suite" and Absurd Person Singular."

His television experience includes feature roles on such varied shows as "The Robert Montgomery Hour," "Studio One," "Lamp Unto My Feet" and "Hawkins Falls." In addition he has been featured in numerous television commercials, training films for the Army, Navy and Air Force and starred in the movie "Space Jockey."

Since last appearing at The Little Theatre Tomme has made guest appearances on "Dallas."

BETTY ANN GROVE (Faye Medwick) returns to Sullivan after an absence of nine years when she starred with Gary Collins in "Damn Yankees." She made her first appearance at The Little Theatre-On the Square in the 1964 production of "The Sound of Music" and returned in 1965 for "Camelot" and in 1967 for "South Pacific." Miss Grove was introduced to Broadway audiences as the hoydenish Bianca in Cole Porter's "Kiss Me Kate" and later she originated the roll of Nellie Cohan in "George M!" on Broadway and the National Tour. A professional entertainer at the age of eleven, she captivated her native Boston with her song and dance routines, then became featured single for a series of fashion shows and later, as vocalist in leading hotels and clubs. She co-starred with Bess Myerson in the long-running "The Big Pay-off" on television and did a three year stint as the zany and singing sidekick of Bert Parks on TV's "Stop the Music." In 1972 she toured with Ann Miller in

"Anything Goes" throughout New England and at the St. Louis Municipal Opera. She has starred in major musical theatres around the country, recently touring with Shirley Jones in "Show Boat," and last year she was featured with Liv Ullmann in "I Remember Mama," Richard Rodgers' last Broadway musical.

BILL HAENS (Leo) Bill is making his first appearance on the Sullivan stage. However he has worked with many of the stars who have appeared here in previous seasons, including being in "Dear Ruth" with Pat and Eloise O'Brien: "Under the Sycamore Tree" with Imogene Coca and King Donovan and in 263 performances of the "Owl and the Pussy Cat."

Bill, a native of Chicago, Illinois where he attended Goodman Theatre has just recently returned to the midwest from Los Angeles where he made guest appearances on "The Farmer's Daughter," "I Dream of Jeannie," "McMillan and Wife", "Get Smart" and "Days of our Lives."

His feature films include "Dear Heart" and "Wild Seed."

In addition to being an accomplished actor Haens is also a director and among his many credits in this area are: "Gypsy," "Camelot," "Hello Dolly," "Barefoot in the Park" and "Mame."

Haens will also appear in this seasons production of "Oklahoma" as Ali Hakim.

PAUL BLAKE (Director) Paul is making his first directorial appearance at the Little Theatre with "Chapter Two." However he has numerous writing and directing credits.

His television credits include writing and directing several episodes of "The Baxters" and weekly dramatic humor pieces for "Over Easy" the award winning TV series hosted by Hugh Downs.

He was resident director for five years with the American Conservatory Theatre in San Francisco as well as with the Long Warf Theatre in New Haven and the Loretto Hilton Repertory in St. Louis, where he first met Jean Webster.

Blake has also directed the Pre-Broadway tryout of "Waltz Me Around Again," an Arthur Cantor production and for the San Francisco Opera Co., "This is your Life Beverly Sills."

In addition his numerous stock credits include directing former Sullivan favorites Vivian Vance, Kathryn Crosby and Rue McClanahan. Recently he has worked with NBC Talent Tests and directed many screen tests for NBC pilots. In 1981 Blake directed for the Aspen Playwrights Conference where he will return after leaving Sullivan.



A GEM DISCOVERY IN AFRICA



In the gemstone business, new discoveries are very rare. One recent discovery is the gem Tsaveite (Sa-Vo-Rite), found only in the Tsave National Forest of Tanzania, Africa.

Tsaveite has the finest chrome green color of Emerald, yet is probably a thousand times rarer than Emerald.

Even though Tsaveite was discovered approximately 2000 years after Emerald, the gem is already in short supply.

W. T. Flora Gems invites you to come in and see our beautiful collection of Tsaveites. Because of the limited supply, Tsaveites have gone up in value quickly, but are still easily affordable. Wendell Herby, our Certified Gemologist, or Ware Flora are anxious to show you this exciting new gem.

W. T. FLORA GEMS

101 North Water, Decatur 429-4111

CERTIFIED



GEMOLOGIST

HOURS: Monday-Saturday 9:30 a.m. - 5:00 p.m.

PRESHOW ENTERTAINMENT

ANDY MONROE-Musical Director-Burlington, Iowa

DAVID FEHR-Sullivan

BOB MAY-Champaign

KATHY SHEPARD-Decatur

JERALD VINCENT-Kansas City, Missouri

MUSICAL SELECTIONS FROM NEIL SIMON HITS

I'LL NEVER FALL IN LOVE AGAIN ("Promises, Promises")

YOU'LL THINK OF SOMEONE ("Promises, Promises")

I'VE GOT YOUR NUMBER ("Little Me")

WHEN YOU'RE IN MY ARMS (They're Playing Our Song)

IF MY FRIENDS COULD SEE ME NOW ("Sweet Charity")

The preshow entertainment is a new addition to the Little Theatre this season.
Please plan to come early so you can enjoy the musical talents of the 1982 company.

CELEBRITY AUCTION
SATURDAY, JUNE 12 - FOLLOWING MATINEE PERFORMANCE
(ABOUT 4:45 P.M.)
ON THE COURTHOUSE LAWN, SULLIVAN
(in case of rain, inside the theatre)

AN AUCTION SELLING OF PERSONAL ITEMS DONATED BY LITTLE THEATRE STARS
PARTIAL LISTING OF ITEMS:

From Leonard Nimoy: an autograph and color photo of Star Trek's Mr. Spock as he appeared in "One Flew Over The Cuckoo's Nest" here in 1974.

From Betty Ann Grove: a silver and amethyst necklace from Mexico. Betty Ann is one of our "Chapter Two" stars.

From Mathew John Hoffman III: A costume sketch. Mathew designed costumes at the Little Theatre for 5 years. This sketch is of a costume he designed for Barbara Rush in "The Unsinkable Molly Brown".

From Ronald Rogers: a VERY RARE copy of a program from the very first Little Theatre production. Ron was the star of that show, "Brigadoon", and he has autographed the program.

From Ron Tomme: a pair of jockey shorts. Ron wore these shorts in last year's production of "Same Time, Next Year". He'll autograph them, if you like!

From Marvin Miller: a "million dollars!" The secretary to "The Millionaire" on the long-running TV series, Miller gave away one of these checks weekly. Also included is the legal affidavit swearing you to secrecy and the special pen used to sign million dollar checks. Be an instant millionaire!!!

From Helen Wagner: a silver and jade brooch. Known as Nancy Hughes on "As The World Turns", Helen wore this brooch when she appeared as the queen in "Lion In Winter" at the Little Theatre in 1972.

From Mickey Rooney: an autographed photo. Mickey was here in 1976. He is currently appearing on Broadway in "Sugar Babies" and on TV in "One of the Boys".

From Wayne Jones: A Dinner for Two at The Red Fox. A deluxe dinner including a carafe of wine. You may enjoy it one evening when you attend the theatre.

From "The Friends": The opportunity to be an official "Welcoming Committee" You could be the individual who greets John Wesley Shipp (Kelly of "The Guiding Light") when he arrives to play Curly in "Oklahoma". You get a banner and badges and get to be photographed with the star!

From Guy S. Little, Jr.: a theatre costume. Sue Ane Langdon wore this dynamite red velvet and sequin gown as Dolly in 1976.

Lots more items: autographed record albums, autographed copies of stars' books, a gourmet dinner with a star, an antique bed, autographed scripts, a champagne breakfast for two - delivered by a French maid, jewelry and clothing items, plus ENTERTAINMENT BY THE LITTLE THEATRE COMPANY.

Don't miss this event! You could be the proud owner of a personal souvenir from one of the Little Theatre's stars.

Proceeds to The Friends of The Little Theatre. Our volunteer auctioneers are Bob Lamendola and Don Seten.