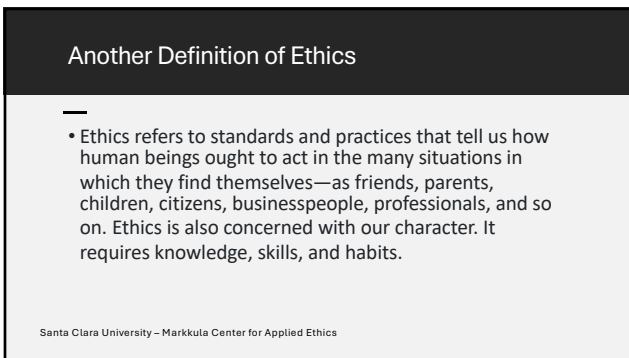




1



2



3

What Ethics is NOT

- Ethics is not the same as feelings.
- Ethics is not the same as religion.
- Ethics is not the same as following the law.
- Ethics is not the same as following culturally accepted norms.
- Ethics is not science.

Santa Clara University – Markkula Center for Applied Ethics

4

Six Lenses of Ethical Decision Making

On what basis can we decide between right and wrong – good and bad?

The Six Lenses

- The Rights Lens
- The Justice Lens
- The Common Good Lens
- The Virtue Lens
- The Care Ethics Lens

Santa Clara University – Markkula Center for Applied Ethics

5

Using the Lenses

- The six lenses help us determine what standards of behavior and character traits can be considered right and good.
- There are two problems with the lenses – first everyone’s perceptions of human civil rights, the common good, and what causes harm.
- The second problem is different lenses could lead to different answers to the question “What is ethics or ethical?”
- Use the lenses as a framework for ethical decision making – being aware of unconscious bias and your own perceptions.

Santa Clara University – Markkula Center for Applied Ethics

6

Framework for Ethical Decision Making

- Identify the ethical issues
- Get the facts
- Evaluate alternative actions (options)
- Choose an option for action and test it
- Implement your decision and reflect on the outcome

Santa Clara University – Markkula Center for Applied Ethics

7

Illinois Code of Ethics

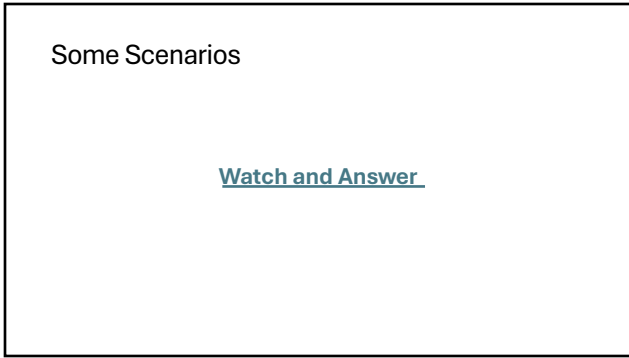
- This document may be found at:
https://www.ilsos.gov/publications/pdf_publications/ipub26.pdf

8

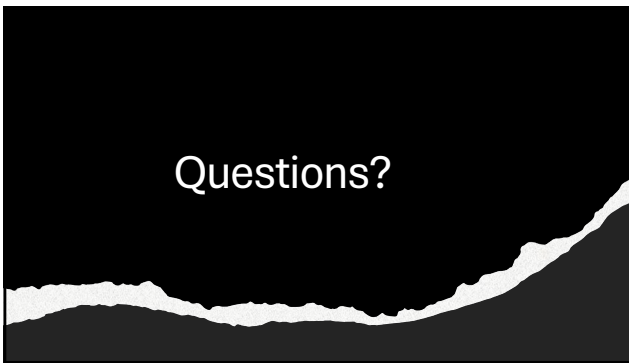
Questions for Discussion

- What does it mean to you to be “ethical”?
- How do the values you live by affect your ethics? What are those values?

9



10



11
